

bluDock™ INSTALLATION INSTRUCTIONS

Ultrameter II™, Ultrameter III™, POOLPRO™ and DIGITAL DIALYSATE METER™

NOTE: Please read these instructions thoroughly and carefully — Damage caused by improper installation or mishandling will void the warranties of the instrument and the new bluDock module.

CAUTION: Moisture trapped in the instrument will cause damage. Careful adherence to the following procedure will significantly reduce the potential for failure due to moisture contamination.

While the instrument is open, we recommend you replace the battery with a new 9V alkaline battery. For clarity, this procedure is broken down into four sections. Follow each section carefully to avoid damage. Refer to the drawings on the back of this document as necessary.

I. Preparing and Opening the Instrument Case

1. Remove the pH/ORP protective cap from the sensor well, shake out the sensor storage solution, rinse with clean water, and thoroughly dry the sensor well and reinstall the protective cap.
2. If the instrument is wet, dry it thoroughly before proceeding, paying particular attention to the bottom screw holes. Ensure your hands are clean and dry. Moisture will damage the electronics.
3. Turn the instrument over and set it on a clean, dry surface.
4. Using a Phillips screwdriver, remove the 4 bottom screws.
5. Open the instrument carefully. While removing bottom case, ensure the sealing gasket does not stick to the bottom case, and stays in the top case groove. If the gasket comes out, handle it carefully and reinstall it in the top case groove. Exercise extreme care not to allow any water to enter the open case.

II. Installing the bluDock Module

1. For the Ultrameter II Model 4P and the Digital Dialysate Meter Model D-4, skip to step 2.
For all other models: Locate the pH and ORP cables and (without disconnecting them) lift them up off the circuit board enough to allow clearance for installing the bluDock module underneath them.
2. Remove the bluDock module from its packaging.
3. Hold the instrument in your left hand and the bluDock module with the Myron L® label facing up in your right hand.
4. Plug the bluDock module into the bluDock connector. See Figure 2 on the back of this document. Ensure the module is inserted securely into the connector.
5. For the Ultrameter II Model 4P and the Digital Dialysate Meter Model D-4, skip to step 6.
For all other models: Lay the pH and ORP cables back down against the circuit board, the Red cable along the left side, and the Black cable along the right side. Align the cables so that they will NOT obstruct or become pinched by the bottom case or standoff while reinstalling the bottom case. See Figure 3 on the back of this document.
6. Thoroughly inspect and clean both top and bottom case (paying special attention to the case seal), screw wells and screws.

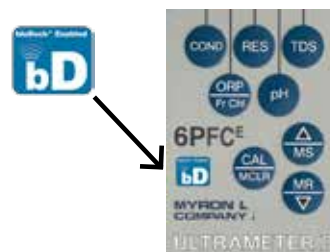
III. Closing the Instrument Case

1. Ensure the sealing gasket is installed in the groove of the top case.
2. Replace the bottom case, aligning it with the groove.
3. Install and start the 4 bottom screws.
4. Tighten the screws evenly and securely in a crisscross pattern. See Figure 4 on the back of this document. A waterproof seal cannot be ensured unless the screws are secure. Uneven tightening will cause the instrument to rock.
5. For the Ultrameter II Model 4P and the Digital Dialysate Meter Model D-4, installation is complete.
For all other models: Turn instrument over and fill the pH/ORP sensor well with Myron L® pH/ORP Sensor Storage Solution and reinstall the protective cap.

IV. Installing the Bluetooth Enabled “bD” Label on the Keypad

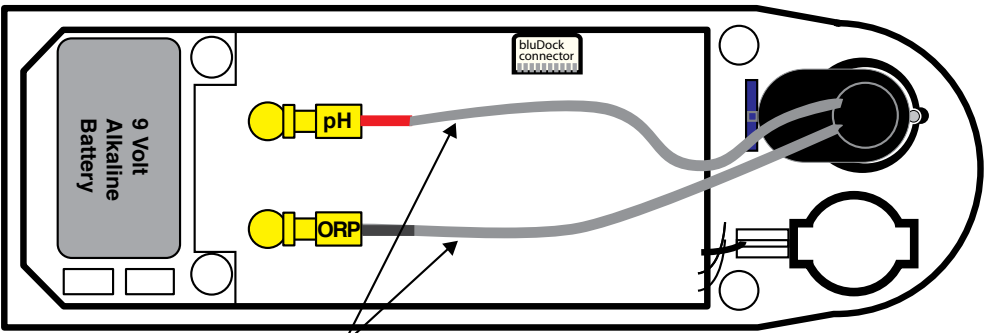
1. Clean the keypad so that it is free of any oil or soap and dry thoroughly.
2. Apply the label underneath the model number on the keypad and hold it firmly in place for at least 30 seconds.

Your instrument is now ready for wireless data transfer. See the instrument and/or Guardian²™ Operation Manual for further instructions.



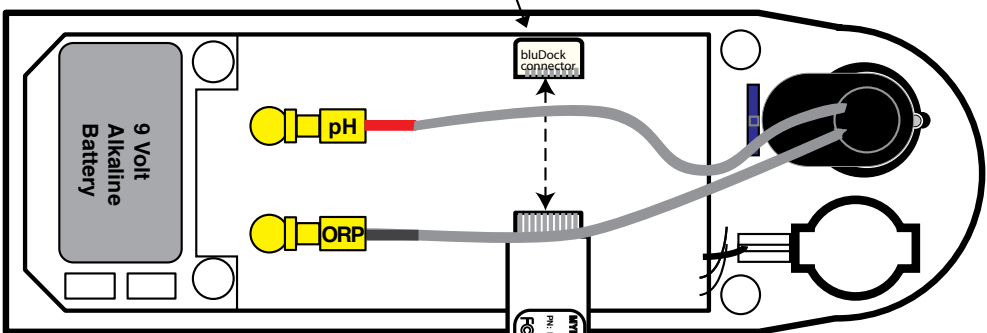
bluDock™ Installation Illustrations

For Ultrameter II™, Ultrameter III™, PoolPro™ and Digital Dialysate Meter™ Ultrameter II Model 4P and Digital Dialysate Meter Model D-4 bluDock module is installed in the same manner on the circuit board as the 6PFC^E. However, moving and repositioning the pH/ORP sensor cables will not apply.



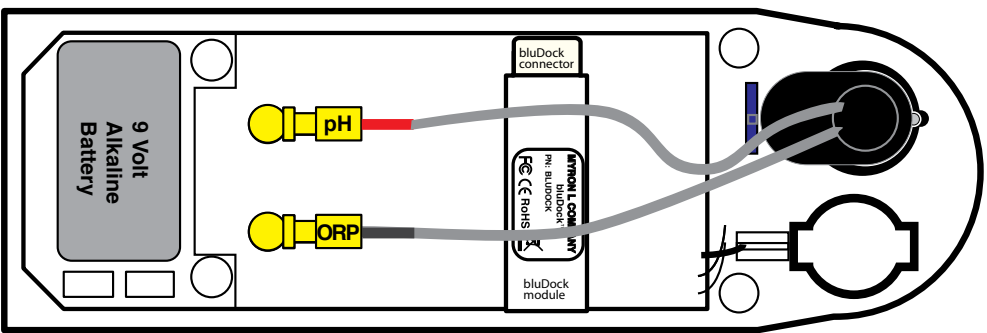
6PFC^E Ultrameter II Shown
Figure 1

Lift the pH and ORP sensor cables up off the circuit board enough to allow clearance for installing the bluDock module underneath them.



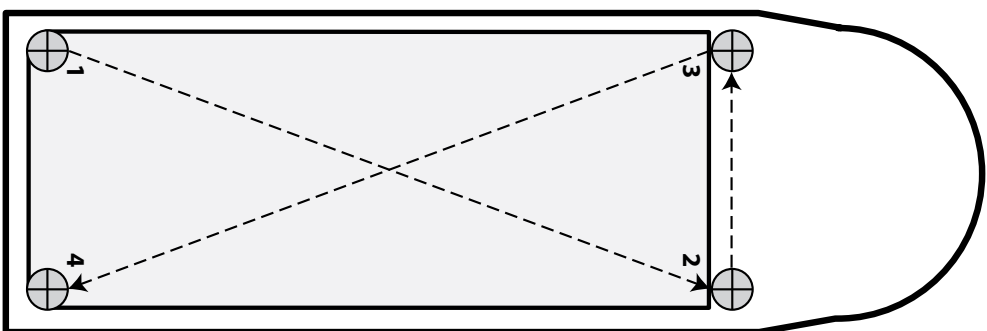
6PFC^E Ultrameter II Shown
Figure 2

Slide the bluDock circuit board under the pH and ORP sensors cables and plug it into the bluDock connector.



6PFC^E Ultrameter II Shown
Figure 3

Lay the pH and ORP cables back down over the installed bluDock circuit board module and position as shown.



6PFC^E Ultrameter II Shown
Figure 4

Tighten screws in a crisscross pattern.