

U2CI™ SOFTWARE APPLICATION

Version 3.0.3 for Windows

OPERATION MANUAL

For bluDock™ Enabled
Digital Handhelds

Wireless Data Transfer



**MYRON L[®]
COMPANY**
Water Quality Instrumentation
Accuracy • Reliability • Simplicity

TABLE OF CONTENTS

1. Benefits and Features	2
1.1 General Description	2
1.2 bluDOCK Accessory Package Contents	2
1.3 U2CI Application Product Highlights	2
2. Other General Information	2
2.1 Limited Warranty	2
2.2 System Requirements	2
2.3 U2CI Operation Manual	2
3. Start Up	3
3.1 Launching the U2CI Application	3
4. U2CI Menus and Commands	4
4.1 Summary and Work Area Layout	4
4.2 Tool Panel	5
4.3 U2CI Data Window Menus and Controls	6
4.4 U2CI Menus and Control Locations	7
4.5 File Control Menu	8
4.6 Data Window Command Ribbon	9
5. U2CI Data Window	10
5.1 Data Window Layout	10
5.2 Data Tab – Column Definitions	11
6. Pairing to and UnPairing from an Instrument	12
6.1 General Information	12
6.2 Turning On the Myron L Company Instrument's PC Mode	12
6.3 Pairing to a Myron L Company Instrument	13
6.4 Looking Up the Port Number	16
6.5 Disconnecting an Instrument	17
6.6 Un-Pairing an Instrument	17
7. U2CI Instrument Functions	18
7.1 General Notes on Instrument Functions	18
7.2 Selecting a COM Port	19
7.3 Downloading Data	20
7.4 Appending New Data to an Existing Data Window / File	21
7.5 Assigning a Name to an Instrument	22
7.6 Setting the Instruments Date and Time	23
7.7 Erasing Measurement Data from an instrument	24
8. U2CI Features	25
8.1 Loading a Saved .mlc File	25
8.2 Saving a Data in Encrypted .mlc Format	26
8.3 Exporting Data In an Open Format (Save As)	27
8.4 Printing and Page Setup	28
8.5 Adding Reference Information	29
8.6 Sorting Data	30
8.7 Preferences	32
9. Simple Graphs	33
9.1 General Graph Information	33
9.2 Creating Simple Line Graphs	34
9.3 Creating Simple Histograms	36
9.4 Editing and Changing Graphs	38
9.5 Deleting a Graph from a Data Window	39
10. Troubleshooting	40
10.1 Error messages	40
10.2 Other Troubleshooting Tips	41

1. BENEFITS AND FEATURES

1.1 GENERAL DESCRIPTION

The Myron L Company U2CI application allows you to transfer data via Bluetooth^{®1} wireless technology to the following Myron L Company Instruments:

- Ultrameter II™.
- Ultrameter III™.
- POOLPRO™.
- DIGITAL DIALYSATE METER™.

1.2 BLUDOCK ACCESSORY PACKAGE CONTENTS

- Quick Start Installation Guide.
- Dongle for downloading data to Mac or PC platforms that do not have built-in Bluetooth[®] capabilities.

1.3 U2CI APPLICATION PRODUCT HIGHLIGHTS

U2CI™ 3.X.X for Windows will run on MS Windows 7² and allows you to:

- Transfer data wirelessly with accuracy, reliability and simplicity.
- Save data files in a secure, encrypted format (.mlc).
- Export data files in the following open formats: .csv, .xls, .xlsx and .pdf (without Optical Character Recognition).
- Associate all data from a particular instrument by assigning each instrument a unique name.
- Sort data by up to three, nested sort keys.
- Append new measurements to saved, .mlc-formatted files.
- Create Simple line graphs and histograms.
- Set the instrument time and date from your computer.
- Clear measurements stored in the instruments' memory.
- Produce simple histograms and line graphs for each measurement type.
- Includes a Demo data file to allow the user to experiment with the software without a connected and active instrument.

NOTE: For further information, please contact the Myron L Company.

2. GENERAL INFORMATION

2.1 LIMITED WARRANTY

All Myron L Company bluDock accessories have a Two Year Limited Warranty. Warranty is limited to the repair or replacement of the bluDock only, at our discretion. The Myron L Company assumes no other responsibility or liability.

2.2 SYSTEM REQUIREMENTS

- Operating System: Microsoft Windows 7™.
- Requires Microsoft .NET Framework 4 or later.
- Disk Space: 40MB of free disk space.
- Adobe Reader[®] (required for viewing the onboard Operation Manual).

2.3 U2CI OPERATION MANUAL

Click U2CI HELP under the HELP menu to open a .pdf file of the U2CI Operation Manual for your software revision.

- NOTE: This manual may have been updated since the release of this version of the U2CI Software. The most up to date version of this manual can always be found on the Myron L Company website at: http://www.myronl.com/main/Operation_Manuals_DL.htm

¹ Bluetooth is a registered trademark of Bluetooth SIG

² Windows is a registered trademark of Microsoft Corp.

3. START UP

3.1 LAUNCHING THE U2CI APPLICATION

The U2CI application can be started several ways.

- By double clicking the Application Icon in the U2CI application folder.
- By clicking on a U2CI shortcut (if you created one) on Windows desktop.
- By clicking on the U2CI icon in the Task Bar if you pinned it there.
- By double-clicking on any .mlc formatted file located on your computer.

NOTE: The first time you launch the U2CI application your computer might display a Security Warning. If it does follow the instruction in the illustration below.

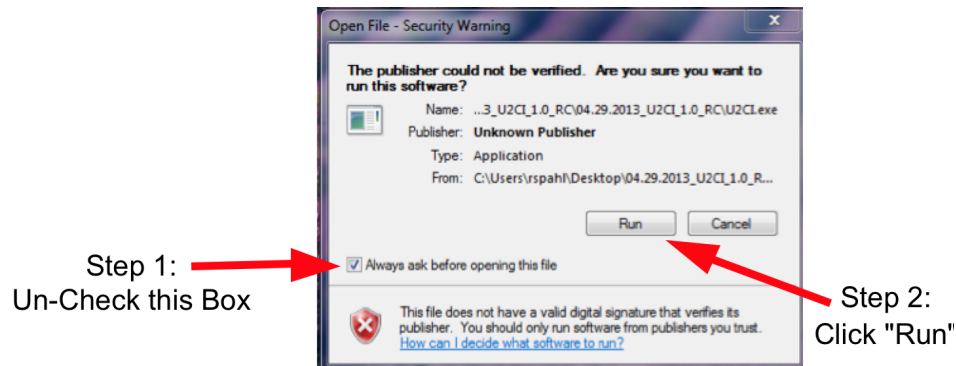


Figure 1

3.2 QUITTING THE U2CI APPLICATION

To quit the U2CI Application:

- Type CTRL +Q
- Click the "X" button on the Tool Panel Title Bar
- Close via the Windows 7 Task Bar.
 - Mouse-over the U2CI Icon on the Windows Task Bar.
 - Right Click on U2CI Tools on the pop up menu.
 - Select Close U2CI from the pop up submenu.

4. U2CI MENUS AND COMMANDS

4.1 SUMMARY AND WORK AREA LAYOUT

The U2CI application work area (Figure 2) includes:

- Tool Panel (Figure 4) and;
- A Data Window. A separate window will open for each saved file. Each Window will include:
 - Window Control Menu (Figure 5 and Figure 7).
 - Window Control Buttons (Figure 5 and Figure 6).
 - File Control Menu (Figure 5 and Figure 8).
 - The Command Ribbon, which includes:
 - U2CI Home Menu (Figure 5 and Figure 9).
 - U2CI Graph Menu (Figure 5 and Figure 12Figure 10).
 - U2CI Instrument Menu (Figure 5 and Figure 11).
 - A Data Tab
 - Graph Tabs (once you have created a graph).
 - A Reference Info Field.
 - A Footer.

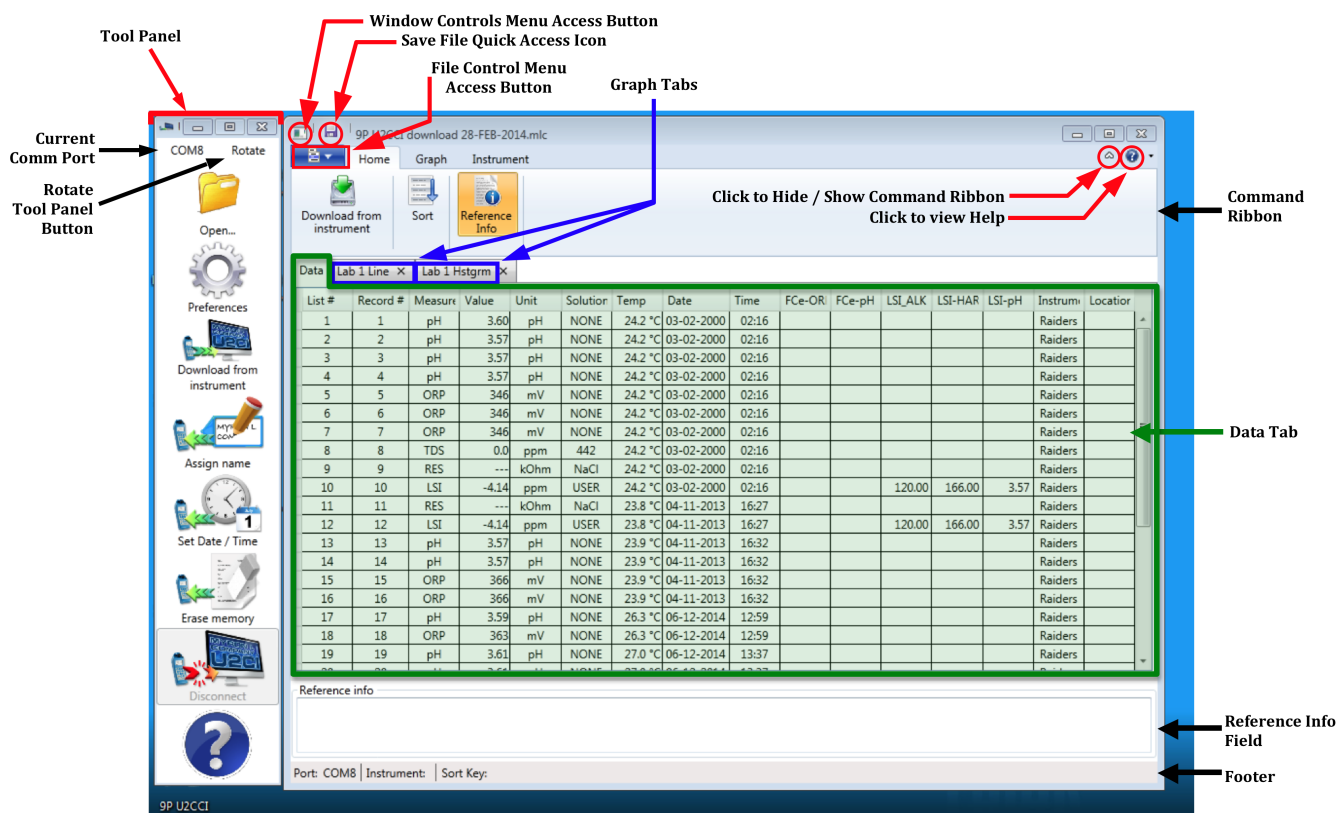


Figure 2

U2CI Software Application – Operation Manual for WINDOWS

TOOL PANEL

The U2CI Tool Panel contains dedicated buttons for activating various functions and features. The Panel may be displayed Vertically (Default) (Figure 3) or Horizontally (Figure 4).

The following brief descriptions give a general sense of each button's function. More detailed information can be found in Sections 7 and 8 of this manual.

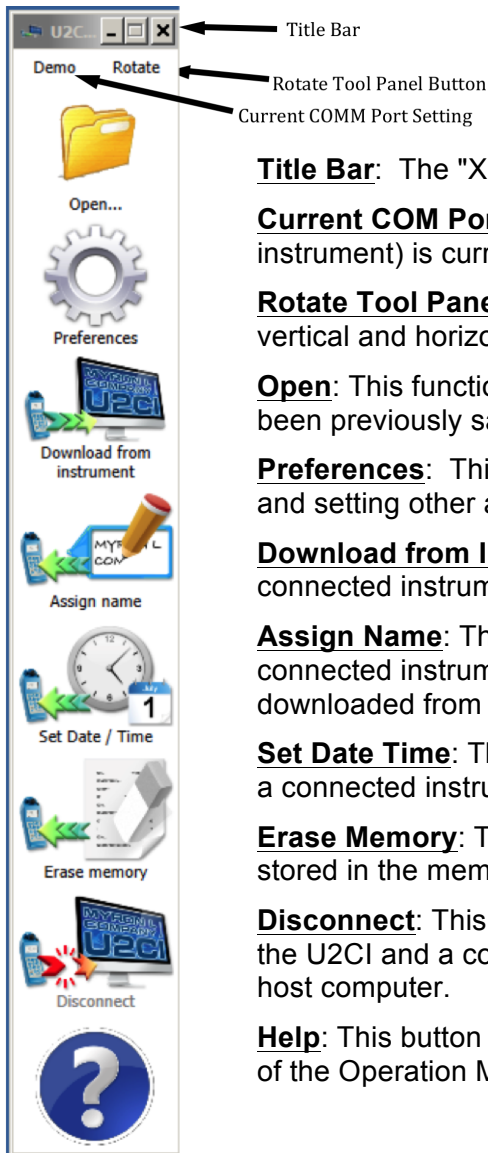


Figure 3

Title Bar: The "X" Button closes all windows and quits the U2CI Application.

Current COM Port Setting: This field shows which COM Port (and therefore which instrument) is currently connected to the U2CI application.

Rotate Tool Panel Button: Click on this button to toggle the Tool Panel between vertical and horizontal orientation.

Open: This function button allows the user to open .mlc formatted files that have been previously saved.

Preferences: This function button opens a window for selecting the active comport and setting other application preferences.

Download from Instrument: This function button starts the transfer of data from a connected instrument into the U2CI application environment.

Assign Name: This function button allows you to assign or change the name of a connected instrument. The instrument name is always associated with data downloaded from that instrument.

Set Date Time: This function button allows you to set the internal date and time for a connected instrument.

Erase Memory: This function button allows you to erase the measurement data stored in the memory of a connected Instrument.

Disconnect: This function button allows you to close the communication between the U2CI and a connected instrument. It does not un-pair the instrument from the host computer.

Help: This button opens up a menu from which the user can view an electronic copy of the Operation Manual or click a link to Myron L Company's website.



Figure 4



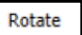




U2CI Software Application – Operation Manual for WINDOWS

4.2 U2CI DATA WINDOW MENUS AND CONTROLS

The following menus and controls will become available after you open a U2CI Data Window by either downloading data from a Myron L Company instrument, or opening a previously saved .mlc file.

- Window Control Buttons (Figure 6).
- Window Control Menu (Figure 7).
- File Control Menu (Figure 8).
- The Command Ribbon, which includes:
 - U2CI Home Menu (Figure 9).
 - U2CI Graph Menu (Figure 10).
 - U2CI Instrument Menu (Figure 11).

Table 1: Data Window – Internal Menus and Commands

MENU	COMMAND	KEYBOARD SHORTCUT	MAIN TOOL PANEL BUTTON	NOTES:
GENERAL CONTROLS	QUIT U2CI	CTRL +Q		Closes all windows and Quits the U2CI Application
	MINIMIZE TOOL PANEL			Minimizes the Tool Panel. To restore the tool panel, mouse over the U2CI Icon in the Windows Task bar and select U2CI Tools" from the pop up menu.
	ROTATE TOOL PANEL			Toggles the Tool Panel between Vertical and Horizontal orientation.
WINDOW CONTROL Menu 	RESTORE			Not Applicable to the U2CI Data Window.
	MOVE			Not Applicable to the U2CI Data Window.
	SIZE			Not Applicable to the U2CI Data Window.
	MINIMIZE			Minimizes the active U2CI Data Window.
	MAXIMIZE			Maximizes the active U2CI Data Window.
	CLOSE			Closes the active Data Window. This Button DOES NOT quit the U2CI Application.
FILE CONTROL Menu 	DOWNLOAD FROM INSTRUMENT	CTRL +N		Initiates transfer of data from an instrument. Also in the INSTRUMENT Menu.
	LOAD	%O	YES	Opens and displays data from a saved .mlc file.
	SAVE	CTRL +S		Saves the active Data Window in encrypted .mlc file format.
	SAVE AS	⇧ CTRL +S		Saves the active Data Window as a .mlc, .xls, .xlsx, .csv or .pdf formatted file.
	PRINT	CTRL +P		Allows the user to either Print or Preview the contents the active data window.
	ABOUT U2CI			Opens a window that shows Revision level of U2CI program
	PREFERENCES 	Preferences	YES	Button in Lower right corner. Opens a window for selecting the active COM port and setting other application preferences.
	EXIT 			Button in Lower right corner. Closes the active Data Window. This Button DOES NOT quit the U2CI Application.
Control Ribbon Menus				
U2CI HOME Menu	DOWNLOAD FROM INSTRUMENT	CTRL +N		Initiates transfer of data from an instrument. Also in the UM COMMAND Menu.
	SORT ASSISTANT	CTRL +T		Allows user to sort the data by up to 3 sort keys.
	REFERENCE INFO			Toggle to Show and Hide the REFERENCE INFO field at the bottom of the Data Window.
U2CI GRAPH Menu	LINE GRAPH			Creates a simple line graph from one data type as a new Tab in the active window.
	HISTOGRAM			Creates a simple histogram from one data type as a new Tab in the active window.
	EDIT GRAPH			Allows the user to edit an already existing Graph Tab.
U2C INSTRUMENT MENU	DOWNLOAD FROM INSTRUMENT	CTRL +N	YES	Initiates transfer of data from an instrument. Also in the FILE Menu.
	ASSIGN NAME		YES	Changes the name stored in the connected instrument's memory.
	SET DATE / TIME		YES	Edits the connected instrument's Time and Date settings.
	ERASE MEMORY		YES	Erases all measurement data stored in the connected instrument.
	DISCONNECT		YES	Disconnects the currently connected instrument from U2CI application.

4.3 U2CI MENUS AND CONTROL LOCATIONS

The following are located in the upper left corner of **each** U2CI Data Window. See Table 1 on page 6 for a brief description of their function.

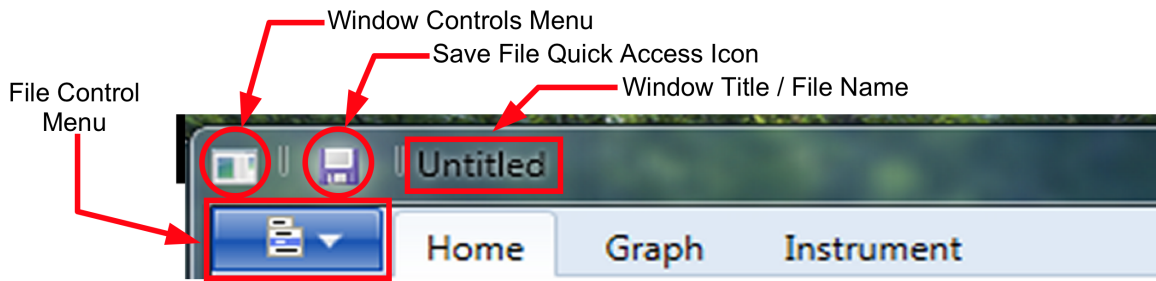


Figure 5

The following are located in the upper right corner of **each** U2CI Data Window. See Table 1 on page 6 for a brief description of their function.

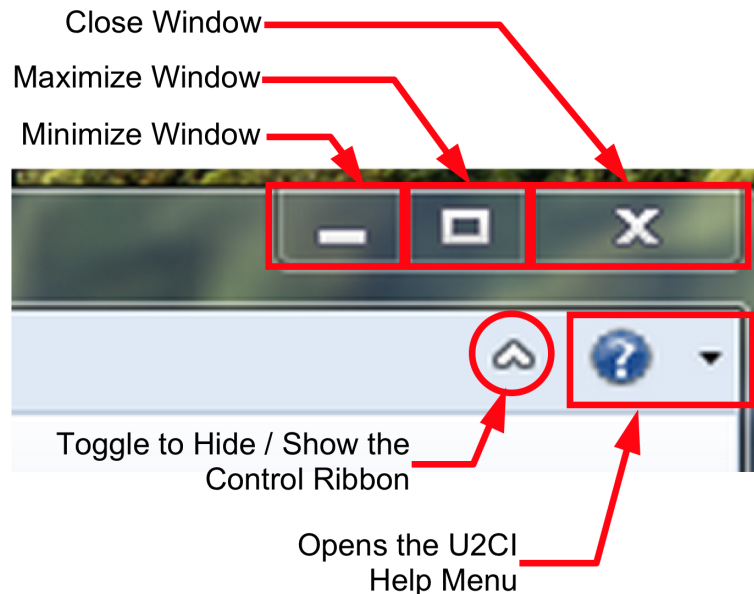


Figure 6

The HELP Menu includes:

- U2CI HELP: Displays a .pdf version of the U2CI Operating Manual.
- A link to the Myron L Company website.
- ABOUT U2CI: Brief Description of the U2CI and Revision number.

U2CI Software Application – Operation Manual for WINDOWS

WINDOW CONTROL MENU

- This menu contains standard MS Windows commands for opening, closing, maximizing and minimizing the Data Window.
- See Table 1 on page 6 for a brief description of these commands.

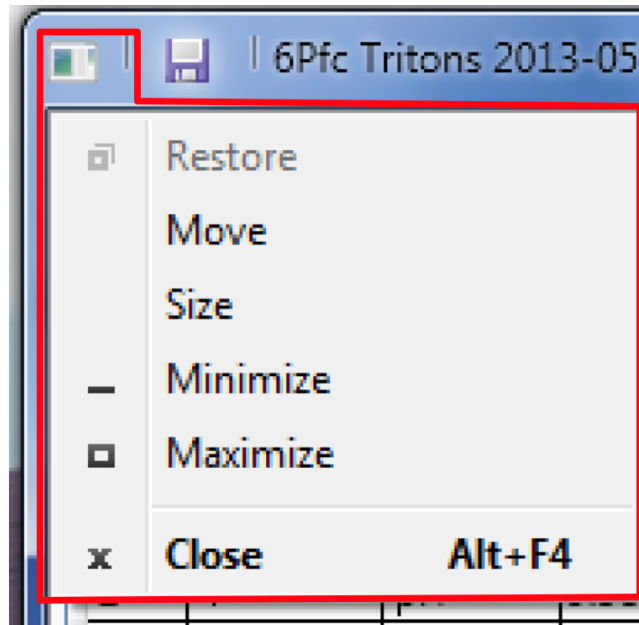


Figure 7

4.4 FILE CONTROL MENU

- This menu contains commands for downloading or appending new data, opening saved .mlc files, saving, exporting (Save As) and printing.
- See Table 1 on page 6 for a brief description of these commands.

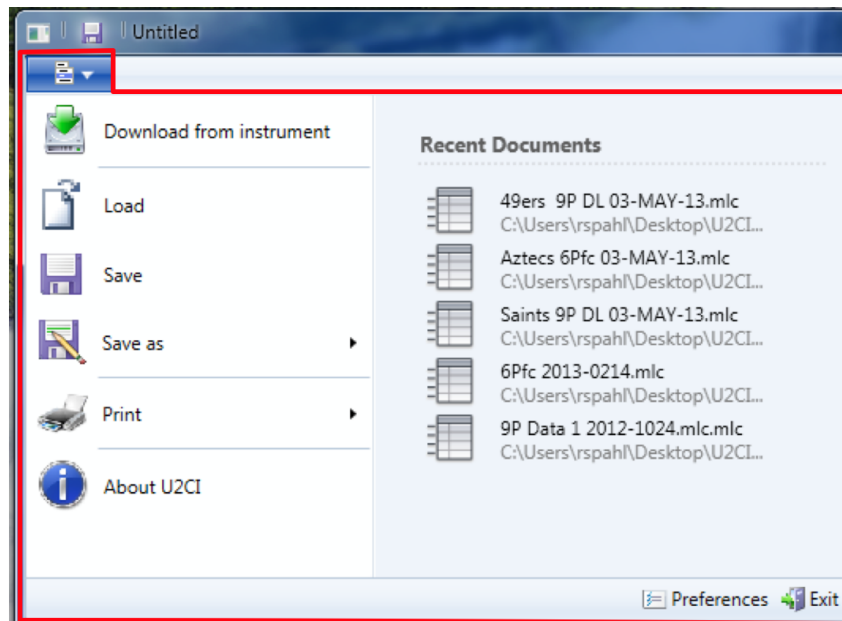


Figure 8

4.5 DATA WINDOW COMMAND RIBBON

HOME Menu:

- See Table 1 on page 6 for a brief description of these buttons.

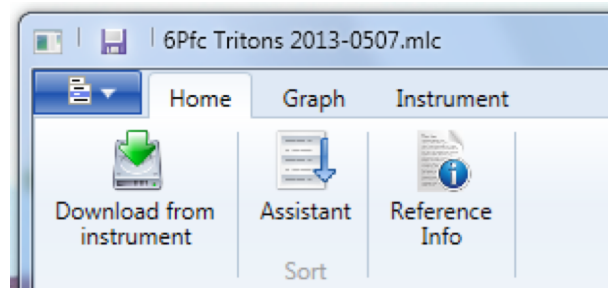


Figure 9

U2CI GRAPH Menu

- See Table 1 on page 6 for a brief description of these commands.

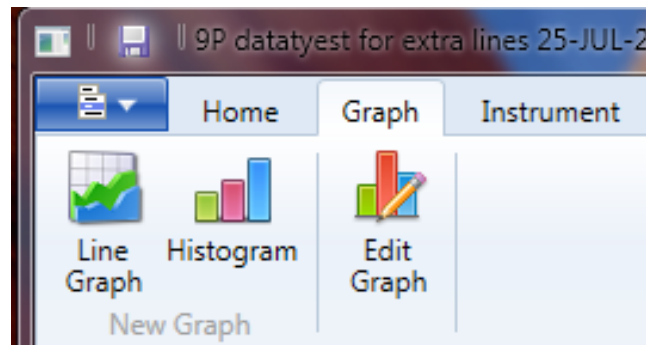


Figure 10

U2CI INSTRUMENT COMMANDS Menu

- See Table 1 on page 6 for a brief description of these commands.

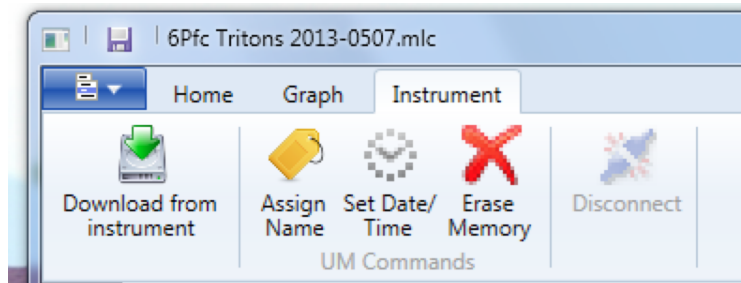


Figure 11

5. U2CI DATA WINDOW

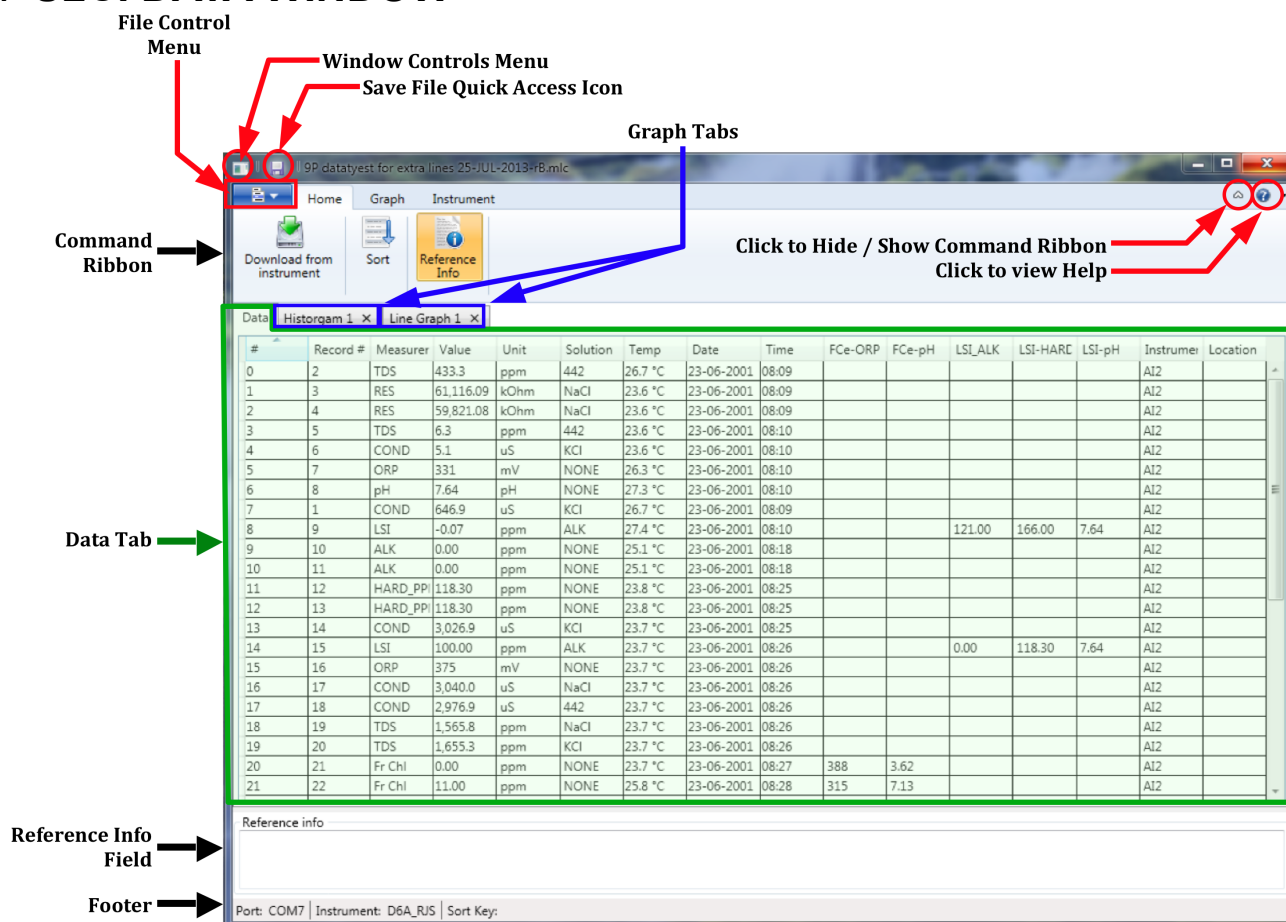


Figure 12

5.1 DATA WINDOW LAYOUT

Data that is either downloaded from a Myron L Company instrument or loaded from a .mlc formatted data file is displayed in a Data Window. This window includes:

INTERNAL WINDOW MENUS: See Sections 4.2 through 4.5 inclusive).

THE DATA TAB: This tab displays the data in a tabular format with individual record organized in rows and the individual data fields of each record organized in column.

- The information displayed in these columns and rows is secure and cannot be edited or changed.

GRAPH TABS: Each time a graph is created from the data in the Data Tab a separate tab is created that displays that graph.

REFERENCE INFORMATION FIELD: This is an editable field which allows the user to add general notes or supplementary information to about the data (see Section 8.5).

FOOTER: The following information will appear at the bottom of the Data Window:

- The COM port from which the data downloaded or appended to this Window most recently.
- The current setting for the multiple key SORT feature:
 - This will list the current sort keys and whether they are set for ascending vs descending order.
 - This section will be blank until the first time the Multiple Sort function is used.

5.2 DATA TAB – COLUMN DEFINITIONS

COLUMN FORMATTING:

- The width of the various columns of the Data Tab maybe resized by:
 - Placing the cursor over the dividing line between column headings then clicking and grabbing the line, then slide it left or right.
- The horizontal order of columns can be changed by:
 - Placing the cursor anywhere inside the column heading, then grabbing and sliding the column left or right until it is in the desired position.

COLUMN DEFINITIONS

List #: This is the number for the row in the data display window. It is not part of the data that is downloaded from the instrument. It will not change or move when the data is sorted.

Record #: This is the memory location where the data for this measurement was stored in the source instrument's memory. It will move with the data row when the data is sorted.

- Since the data in each of the instruments memory locations can be over-written the record number is not always in chronological order.
- If the data in a specific instrument memory location has been cleared, it is not included in the downloaded data and therefore will not appear in the U2CI window.

Measurement: This field shows the type of measurement that was made, such as conductivity (COND), resistivity (RES), Total Dissolved Solids or MIN/SALT (TDS), pH, ORP, FC^E (Fr. Cl) or LSI.

- Temperature is recorded in a separate column.
- When downloading data from ad D6 or some older 6P instruments FC^E is reported as, "ORP-PPM" in the measurement column.

Value: This field contains measured value of the reading.

Units: This field displays the units of measure for that measurement.

Solution: This field shows the Temperature Compensation Model setting of the Instrument when the measurement was taken.

- Some Myron L Company Instruments can make certain measurements using more than one type of temperature compensation models, each of which corresponds to particular solution type (e.g. NaCl; KCl, 442, etc.).
- For LSI measurements this field will display the word "USER".
- Except for LSI measurements, measurement types where there is only one or no temperature compensation curve, such as FC^E, ORP, pH, etc., this field displays "NONE".

Temp: This field displays the temperature of the solution being measured at the time of the measurement.

Date: This field displays the date of the measurement.

Time: This field displays the time of the measurement.

FCe-Columns: Myron L Company FC^E (free chlorine equivalent) ppm measurements are calculated based on the ORP Value and pH value of the solution.

- **FC^E-ORP:** This field displays the solution's ORP mV value when the FC^E measurement was made.
- **FC^E-pH:** This field displays the solution's pH value when the FC^E measurement was made.

LSI-Columns: These Columns display the base values that were used to calculate the ppm value that is displayed in the Measurement column for LSI readings.

- **LSI-ALK:** This field displays the Alkalinity value used to calculate the LSI value.
- **LSI-HARD:** This field displays the Hardness value used to calculate the LSI value.
- **LSI-pH:** This field displays the pH value used to calculate the LSI value.

Instrument : This field contains the name given to the instrument with which the measurement was made (see ASSIGN NAME).

- If the instrument has not been assigned a name, this field will be blank.

Location : Not applicable to the current desktop version of the U2CI application.

6. PAIRING TO AND UNPAIRING FROM AN INSTRUMENT

6.1 GENERAL INFORMATION

If your computer does not have a built in Bluetooth transceiver,

- Plug the Bluetooth dongle that was included with the U2CI software into a USB port on your computer.
 - If you don't have the dongle that came with the bluDock enabled instrument, one can be ordered from the Myron L Company. Order Part Number # BDDO.

NOTES:

- The passkey for ALL Myron L Company bluDock enabled devices is "**1234**".
- **ALWAYS** write down the port designation assigned to each instrument. It should look something like this example: "**MyronL-03F5**".

6.2 TURNING ON THE MYRON L COMPANY INSTRUMENT'S PC MODE

1) Turn on the PC mode for you Myron L Company instrument.

a. Press any measurement function key on the instrument (e.g. COND, pH, ORP, etc.).

b. Press and hold the down arrow key  until the "**PC OFF**" appears on the instrument's display.



Figure 13


- c. Press the CAL button. 
- The display will briefly change to read "**PC Init**".
- d. Wait until the LCD changes to read PC ON



Figure 14

2) IMMEDIATELY proceed to *Pairing to a Myron L Company Instrument* (see Section 6.3).

6.3 PAIRING TO A MYRON L COMPANY INSTRUMENT

NOTE:

If the Myron L Company Instrument times out at any time during this process, restart it and turn on the PC Mode (see Section 0).

Generally, you may return to the pairing process where you left off without restarting.

To Pair to a Myron L Company instrument using MS Windows 7:


- 1) If you don't see the Bluetooth Icon  on you computer desktop anywhere, click on the "**Show Hidden Icons**" button.
 - It is located at the right side of the Task Bar.



Figure 15

- 2) Click on the Bluetooth Logo.

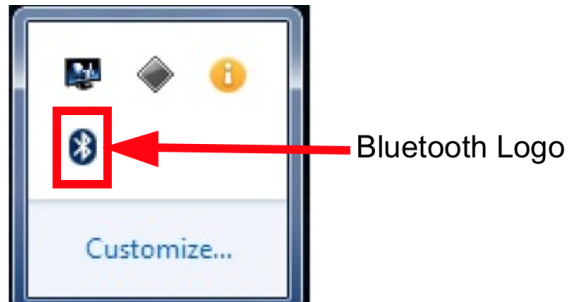


Figure 16

- 3) Select :"**Add Device**" from the Bluetooth dialogue box.

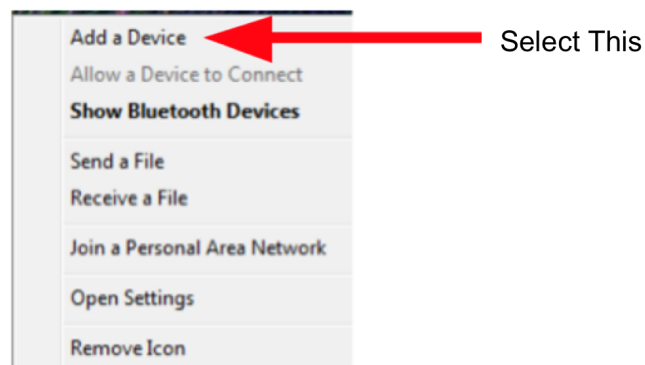
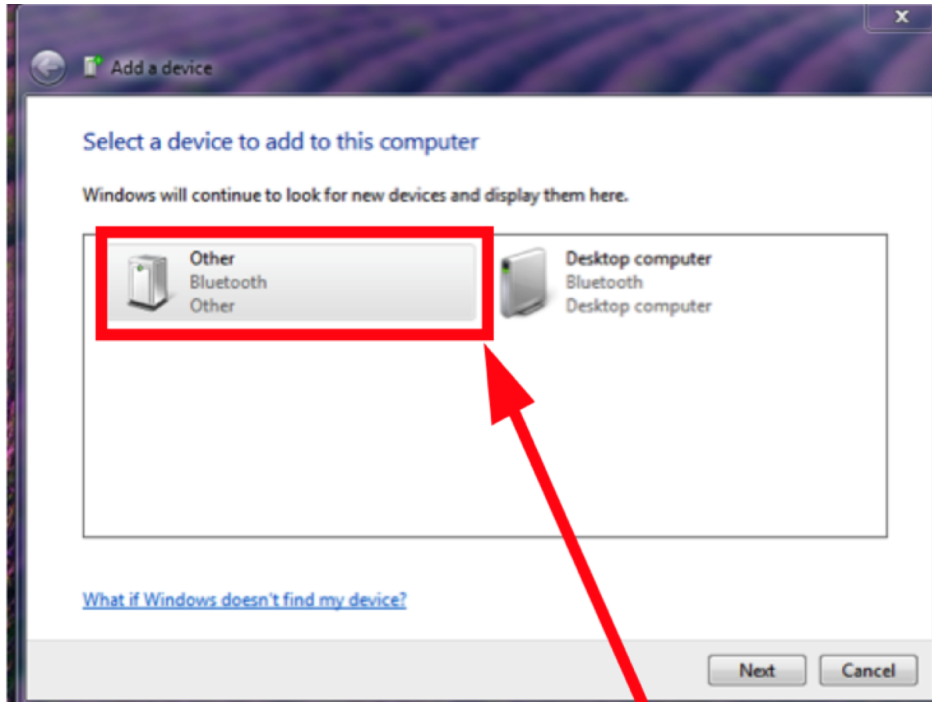


Figure 17

U2CI Software Application – Operation Manual for WINDOWS

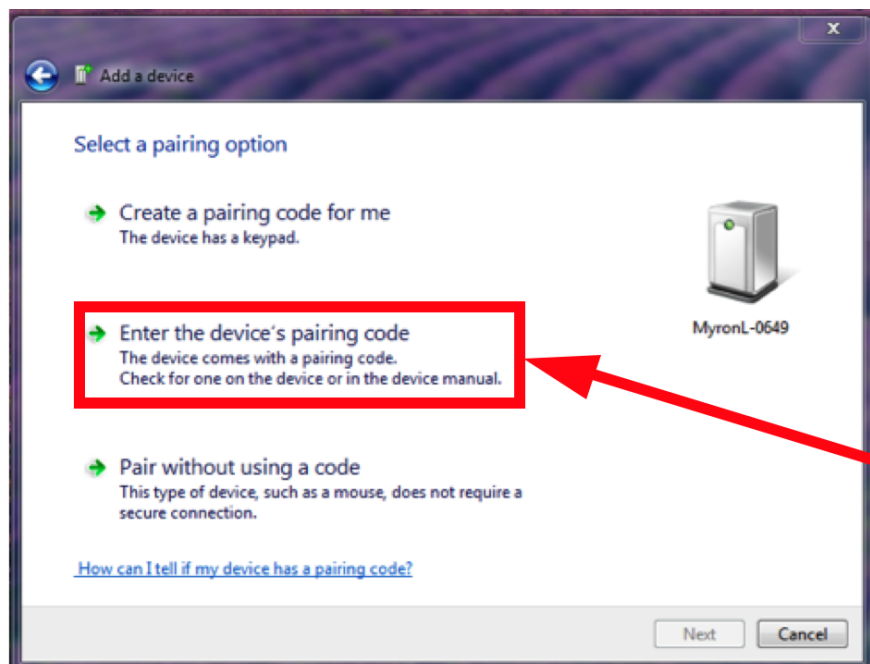
- 4) The Myron L Company instrument will appear as *Other* (Figure 18) or as a hexadecimal device ID (such as "03F5").
- 5) Click on this, then Click "**NEXT**".



New Instrument
Appears Like This

Figure 18

- 6) Select "**Enter the Device Pairing Code**" and "**NEXT**" once the button becomes active.



Select This Option

Figure 19

U2CI Software Application – Operation Manual for WINDOWS

- 7) Enter the pairing code and select **"NEXT"**.
- All Myron L Company instruments have the Pairing Code, **"1234"**.

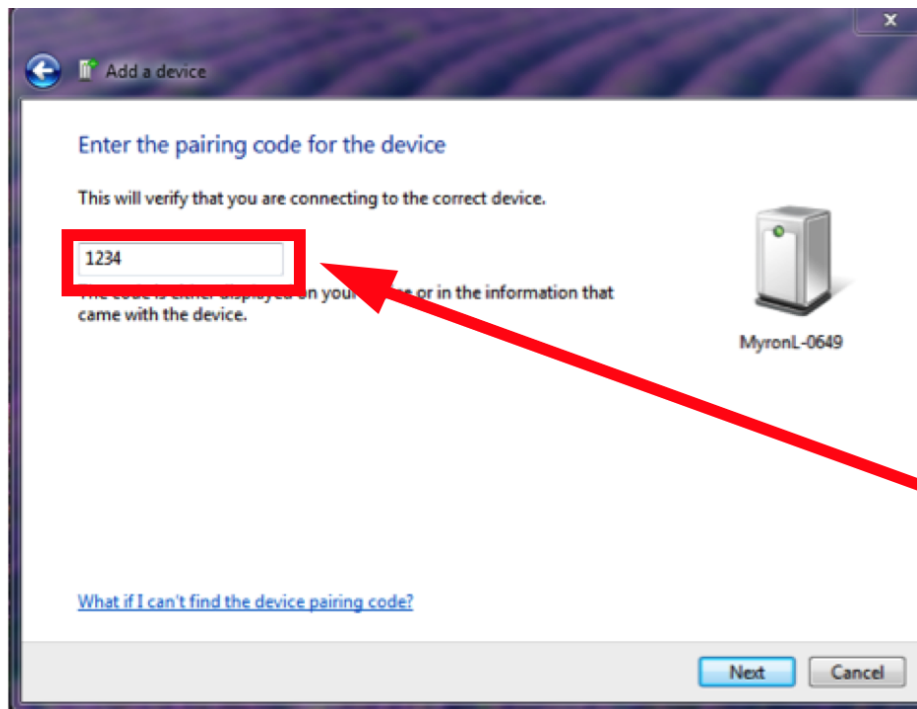


Figure 20

If the pairing was successful, you should see a message similar to Figure 21.

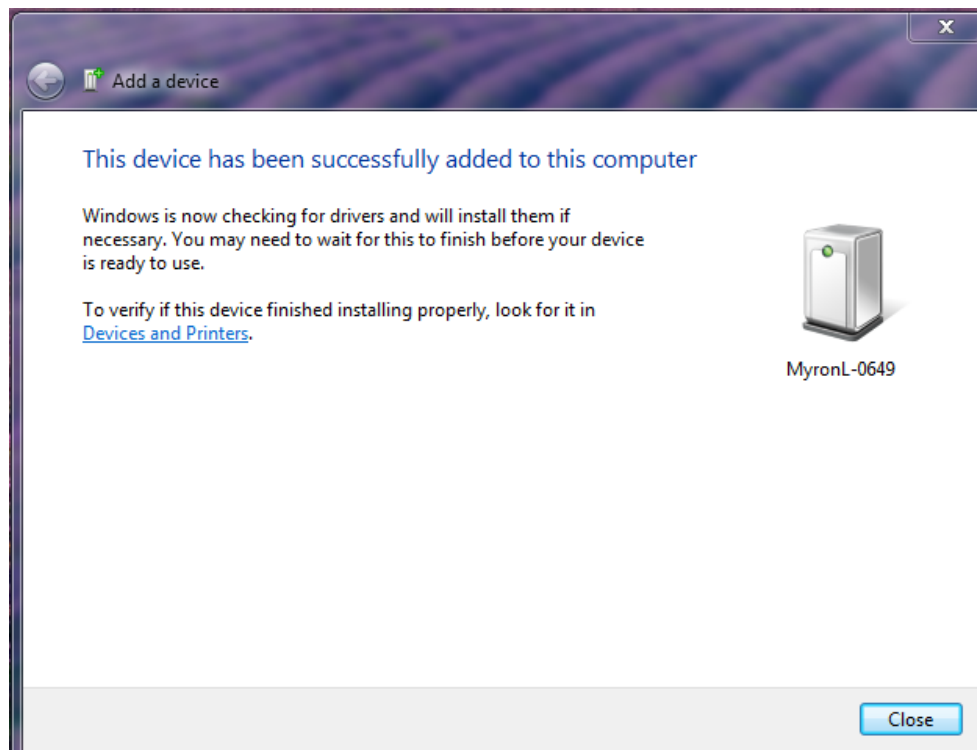


Figure 21

NOTE: At some point during this process the Instrument's Bluetooth ID will appear next to the icon. In the above example this is, **"MyronL-0649."**

6.4 LOOKING UP THE PORT NUMBER

MS Windows assigns an incoming and an outgoing COM port for every Bluetooth device.

- This COM port number will appear in the U2CI Preferences/Port drop down menu.
- You will need to know the incoming port number to select the appropriate port for performing any function that requires communication with the instrument.

To look up the Incoming Port Number:

- 1) Click on the Bluetooth Icon on your desk top.
 - **IF** it is hidden use the "**Show Hidden Icons**" button on the right side of the Task Bar.
 - On some systems it may say "Show Bluetooth Devices."
- 2) Select the appropriate Myron L Company instrument.
 - If you have paired more than one Myron L Company instrument they will all appear in the dialogue box.
- 3) Select the "**Hardware**" Tab.
 - The COM port number will appear in the NAME column in parenthesis.

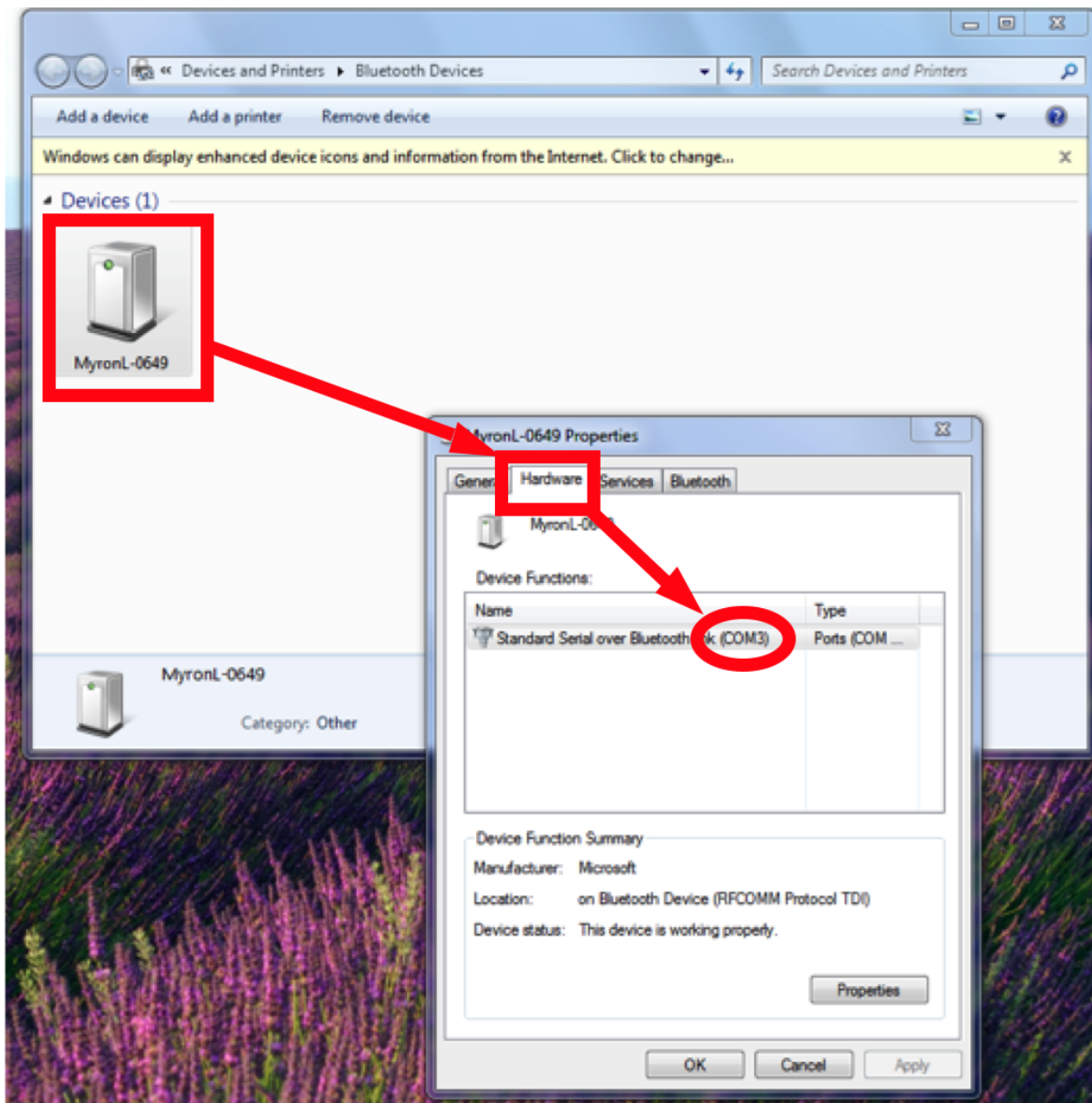


Figure 22

6.5 DISCONNECTING AN INSTRUMENT

This process closes the communication port between the U2CI and the instrument without unpairing the instrument to the computer.

Once an instrument is paired with a specific computer it should be disconnected before pairing with another computer in order to avoid the possibility of Bluetooth related communication errors.

To Disconnect an instrument.

1) Make sure that:

- The instrument's is awake and that the PC mode is set to "**ON**" (see Section 6.2).
- The instrument is paired to your computer and the connection is active (see Section 6.3).
- The correct COM port is selected in the Preferences/Port drop down menu (see Section 6.4).

2) Launch the disconnect process by clicking on the "**DISCONNECT**" button on the Tool Panel (Figure 23).

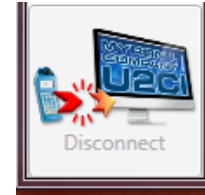


Figure 23

NOTES:

- If the command or the button is grayed out, there is no currently active connection to an instrument on the selected port.
- This does not unpair the instrument from the computer. The COM port associated with the instrument will still appear in the Preferences/Port drop down menu.

6.6 UN-PAIRING AN INSTRUMENT

To completely remove an instrument from the Port Menu of the Preferences dialogue box.

1) Click on the Bluetooth Icon on your desk top.

- **IF** it is hidden use the "**Show Hidden Icons**" button on the right side of the Task Bar.
 - On some systems it may say "Show Bluetooth Devices."

2) When the Bluetooth Device Window opens, click on the instrument you wish to unpair.

3) Click on the "Remove Device" Link at the at the top of the dialogue box (Figure 24).

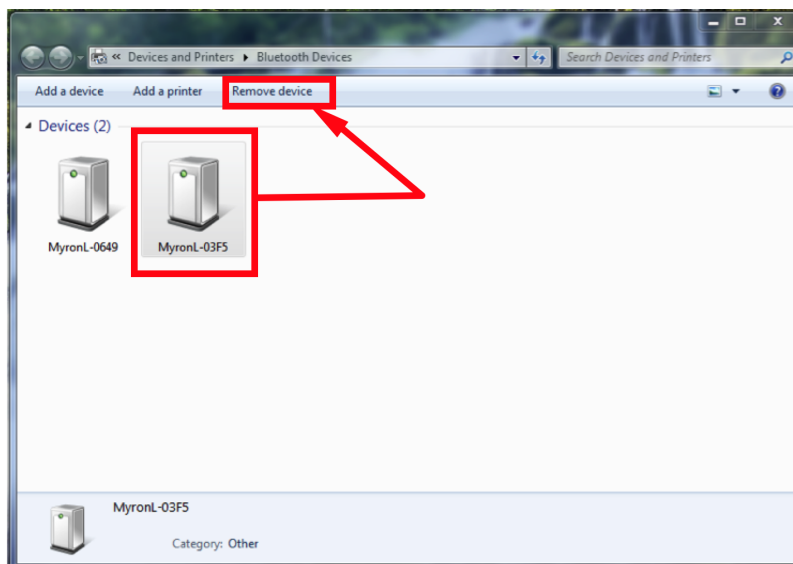


Figure 24

4) The instrument will disappear from the device window.

The next time the U2CI Preferences/Port drop down menu is opened the COM port will be gone from the list.

7. U2CI INSTRUMENT FUNCTIONS

7.1 GENERAL NOTES ON INSTRUMENT FUNCTIONS

WARNING!

Do Not Press any of the buttons on the keypad of the Instrument once the instrument related function has started. This will cause the PC mode to turn OFF.

It the PC mode is turned OFF or the Instrument times out while the U2CI function is in process THE U2CI APPLICATION will CRASH.

Before launching any of the Functions described in this section make sure that:

- The Instrument's Auto Off feature is set to "75" seconds.
- The instrument is awake and that the PC mode is set to "ON" (see Section 0).
- The instrument is paired to your computer and the connection is active (see Section 6.3).
- The correct COM port is selected in the Preferences/Port drop down menu (see Section 6.4).

An error message will appear, similar to the example shown in Figure 25, if:

- The instrument is asleep or if its PC Mode is "OFF";
- The COM port connection is inactive, or;
- The wrong COM port is selected in the Preference Port drop down menu.
- The Instrument's Bluetooth signal is too weak.
 - Try moving the Instrument closer to the host computer.
 - Replace the battery (Even if the Lo Batt indicator is not lit on the Instrument display, the battery may be too weak to broadcast a strong signal).

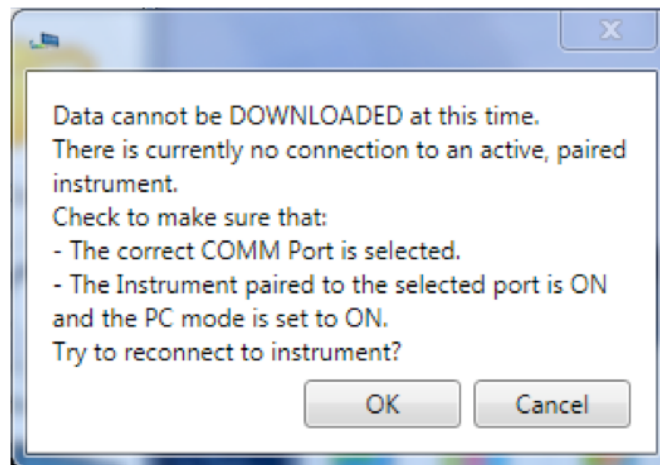


Figure 25

Once the issue is corrected:

- Click the "OK" button to proceed, or;
- Click the "Cancel" button to abort the process.

NOTE

To prolong the battery life of your Myron L Company instrument, turn OFF the instruments PC mode as soon as you have finished interacting with the U2CI Application.

SELECTING A COM PORT

- 1) Open the Preferences/Port drop down menu by clicking on the **PREFERENCES** button on the Tool Panel (Figure 26).

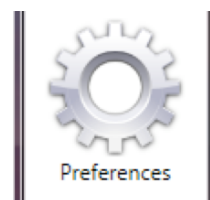


Figure 26

- 2) Select the **Port** drop down menu (Figure 27).

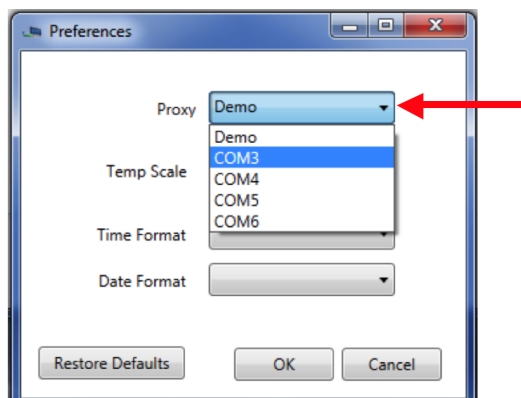


Figure 27

- 3) Find the COM port designation assigned to your Instrument during the pairing process (see Section 6 above).
 - If you don't remember the port designated for the instrument, you can find the incoming port number for a specific Myron L Company instrument, see Section 6.4 above.
- 4) Click the **"OK"** button to complete the selections and close this Preferences window.
 - The new COM port will be displayed on the Tool Panel, just below the Title Bar.
- 5) Click the **"Cancel"** button to abort the process.

NOTES:

- The COM port default setting is **DEMO**. When **DEMO** is selected, the U2CI application will download a set of demonstration data and allows you to explore the functionality of the U2CI application without being connected to an instrument.
- Once selected the port will stay selected until you either:
 - Select another Port.
 - Restore the Preferences settings to their defaults.
- If you accidentally add demo data to your data file, close the window without saving it and start over.

7.2 DOWNLOADING DATA

WARNING!

Do Not Press any of the buttons on the keypad of the Instrument once the instrument related function has started. This will cause the PC mode to turn OFF.

It the PC mode is turned OFF or the Instrument times out while the U2CI function is in process THE U2CI APPLICATION will CRASH (see Section , 9 Troubleshooting).

Before launching the Download process make sure that:

- The instrument's is awake and that the PC mode is set to "**ON**" (see Section 6.2).
- The correct COM port is selected in the U2CI Preference/Port drop down menu (See Sections 6.3, 6.4 and 7.1).

An error message will appear, similar to the example shown in Figure 28, if:

- The instrument is asleep or if its PC Mode is "**OFF**";
- The wrong COM port is selected in the Preference Port drop down menu.
- The Instrument's Bluetooth signal is too weak.
 - Try moving the Instrument closer to the host computer.
 - Replace the battery (Even if the Lo Batt indicator is not lit on the Instrument display, the battery may be too weak to broadcast a strong signal).

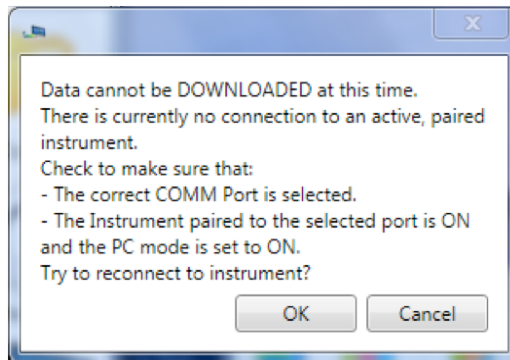


Figure 28

- Once the issue is corrected:
 - Click the "**OK**" button to proceed, or;
 - Click the "**Cancel**" button to abort the process.

To start the download process, click on the "**Download from Instrument**" button in the Tool Panel (Figure 29).



Figure 29

- As the instrument is downloading a progress bar will appear.
- When the download is complete, the U2CI application will open a new Data Window and display the data.

The Download processes can also be accessed via the Instrument Menu in the Data Window Command Ribbon (see Section 4.5).

7.3 DOWNLOAD INTERRUPTIONS

If the download process is interrupted after the data transfer has started, the application will display an error message (Figure 30).

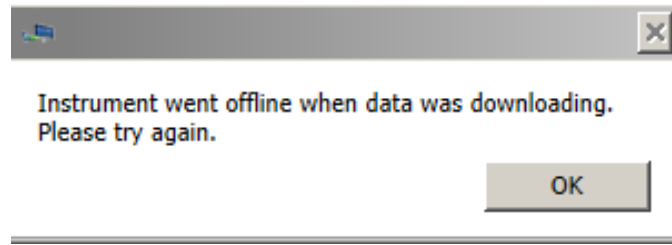


Figure 30

To recover from this:

- 6) Click the OK Button,
- 7) Make sure that:
 - The instrument's is awake and that the PC mode is set to "**ON**" (see Section 6.4).
 - The instrument is paired to your computer and the connection is active (see Sections 6.3).
 - The correct COM port is selected in the U2CI Preference/Port drop down menu (see Section 7.1).
- 8) Restart the download.

7.4 APPENDING NEW DATA TO AN EXISTING DATA WINDOW / FILE

You may append data from multiple instruments into an existing Data Window / file:

- 1) If it is not already, open the data file to which you wish to add data (See Section 8.1).
- 2) Launch the **DOWNLOAD** process (see section 7.2).
- 3) U2CI will display a window (Figure 31) with the following choices
 - **OPEN NEW WINDOW**: Click this button to open a new Data Window and download the data there.
 - **CANCEL**: Click this button to halt the download process and leave any open Data Window unchanged.
 - **OK**: Click this button to download data into this Window / File.
 - The new data will appear at the bottom of the window.

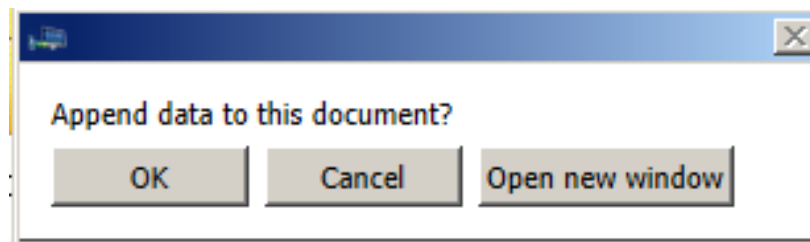


Figure 31

7.5 ASSIGNING A NAME TO AN INSTRUMENT

You can assign a name to an instrument so that the instrument name is always associated with data downloaded from that instrument.

- The name will appear in the NAME column of the Data Window.

To assign a name to an instrument:

- 1) Make sure that:
 - The instrument is awake and that the PC mode is set to **"ON"** (see Section 6.2).
 - The instrument is paired to your computer and the connection is active (see Section 6.3).
 - The correct COM port is selected in the U2CI Preference window(see Section 6.4).
- 2) Click on the **"ASSIGN NAME"** button in the Tool Panel (Figure 32).



Figure 32

- 3) Type the desired name into the dialogue box that appears.
 - Maximum length is 8 characters.

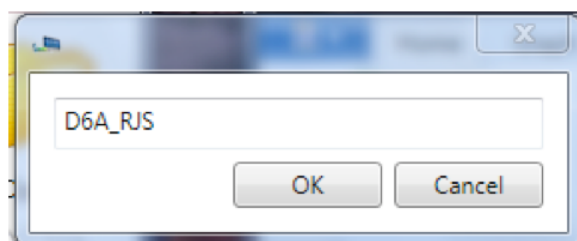


Figure 33

- 4) Click the **"OK"** button to store the name in the instrument's memory.
 - This will overwrite any name already given the instrument
 - To Undo this action you must rename the instrument using the old name..
 - Click the **"Cancel"** button to abort the operation.

The Assign Name feature can also be accessed via the Data Window Instrument Menu (see Section (see Section 4.5).

7.6 SETTING THE INSTRUMENTS DATE AND TIME

You can update or change the date and time settings for your Myron L Company instrument via the U2CI application.

To assign a set or reset the internal Date or Time of an instrument.

1) Make sure that:

- The instrument is awake and that the **PC mode** is set to **ON** (see Section 6.2).
- The instrument is paired to your computer and the connection is active (see Section 6.3).
- The correct COM port is selected in the U2CI Preference window (see Section 6.4).

2) Click on the **"SET DATE / TIME"** button in the Tool Panel (Figure 34).



(see

Figure 34

3) The following dialogue box will appear:



Figure 35

- The default settings should match your computer's current Date and Time settings.
 - *ALWAYS* check to make sure that they do.
- 4) You may use the controls in this window to correct the Date and Time if the default settings are not correct.
- 5) Click the **"OK"** button to change the instrument's date and time setting to match those displayed in the window.
- This will overwrite the current date and time settings for the instrument.
 - if you have changed the date and time using the U2CI window controls, this WILL NOT reset your computer's date and time.
- Click the **"Cancel"** button to abort the operation and leave the Date / Time of your instrument unchanged.

The Set Date / Time feature can also be accessed via the Data Window Instrument Menu (see Section 4.5).

7.7 ERASING MEASUREMENT DATA FROM AN INSTRUMENT

WARNING!
This action can not be undone.

You may use the U2CI application to erase the recorded readings stored in your Myron L Company instrument.

- This function erases all of the recorded readings stored in the instrument's memory.
- It does not erase calibration constants, preference settings, date and time settings, etc.

To start the download Process:

1) Make sure that:

- The instrument is awake and that the PC mode is set to **"ON"** (see Section 0).
- The instrument is paired to your computer and the connection is active (see Section 6.3).
- The correct COM port is selected in the U2CI Preference window (see Section 6.4).

2) Click on the **"ERASE MEMORY"** button in the Tool Panel (Figure 36)

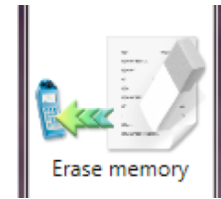


Figure 36

3) A dialogue box will appear that asks you to confirm the Erase Memory command.

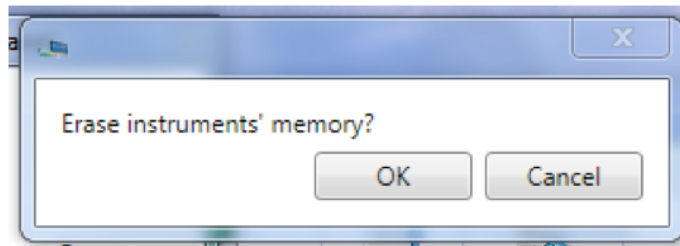


Figure 37

4) Click the **"OK"** button to proceed.

- Click the **"Cancel"** button to abort the erase operation and leave the instrument's memory unchanged.

The Erase Data feature can also be accessed via the Data Window Instrument Menu (see Section 4.5).

8. U2CI FEATURES

8.1 LOADING A SAVED .mlc FILE

Once a file has been saved as an encrypted .mlc formatted file it can be reloaded into the U2CI application.

To LOAD a previously saved .mlc data file use one of the following methods.

A) Hold the cursor over the "**OPEN**" button of the Tool Panel (Figure 38).

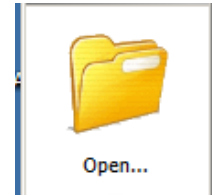


Figure 38

- A drop down menu will appear that includes the most recently opened .mlc files. (Figure 39)
- If the file you desire to open is there, select it.

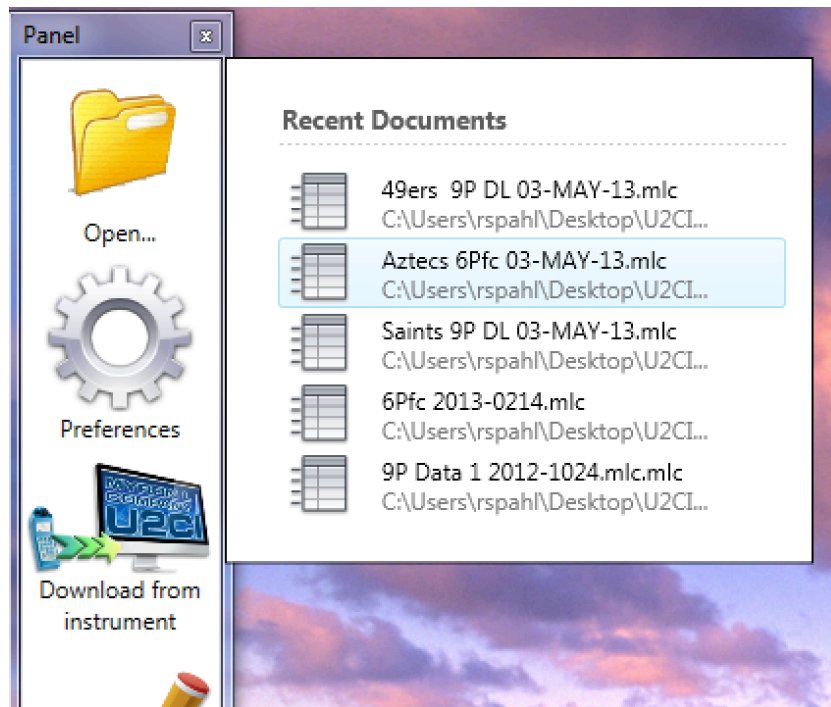


Figure 39

B) Click on the "**OPEN**" button on the Tool Panel (Figure 38).

- A standard WINDOWS browse window will appear.
- Only .mlc formatted files may be selected.

NOTES:

- Data exported using the SAVE AS command in other formats (.xls, .xlsx, .csv and .pdf) cannot be re-loaded into the U2CI application.
- If the file location/path has been changed after the file was saved, the U2CI will **NOT** be able to find and open the .mlc file.
- Once a file is deleted, it will no longer appear in the **Open Recent** list.

The Recent Documents List can also be accessed via the Data Window File Control Menu (see Section 4.4).

8.2 SAVING A DATA IN ENCRYPTED .MLC FORMAT

The U2CI application is designed to keep your data secure and unadulterated. The **SAVE** command automatically exports the contents of the currently active Data Window to an encrypted .mlc file format that can not be read or edited by other types of software.

To save the data in a new or updated Data Window:

- Click the Quick Access "**SAVE**" button at the top left corner of the active Data Window (Figure 40).
- Selecting the "**SAVE**" command under active Data Window's File Control Menu (Figure 40).

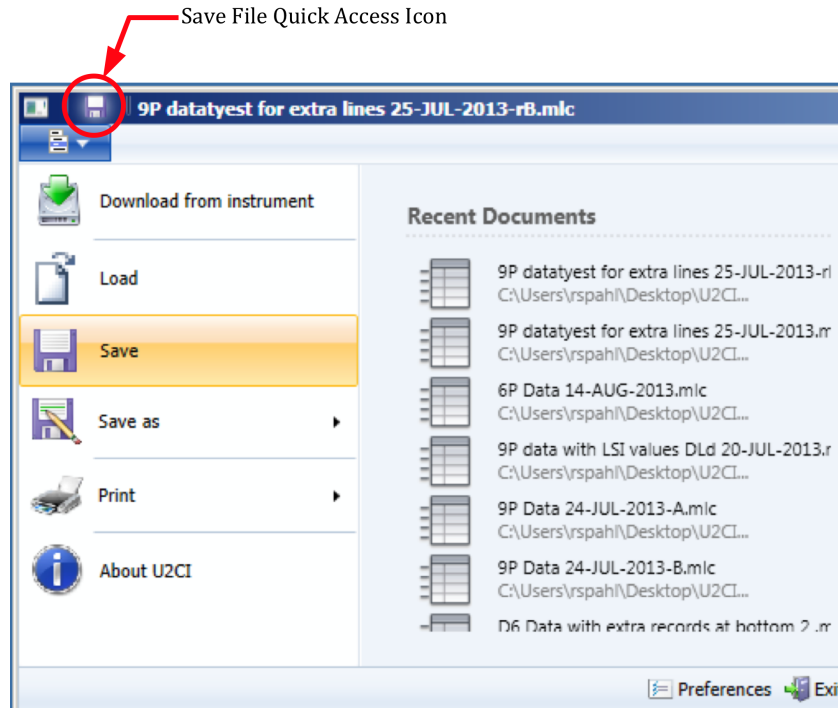


Figure 40

Close the window or Quit the application

If the document has been changed but not previously saved, a standard MS Windows Save dialogue box will open that allows you to (Figure 41):

- Select the save location.
- Close and Save the file.
- Close the window without Saving the file.
- Cancel the operation.

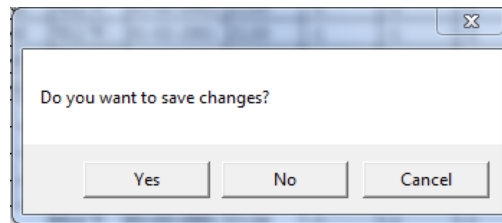


Figure 41

NOTES:

- The Save command automatically exports the data as an encrypted, .mlc-formatted file.
- Only files saved as .mlc formatted files can be reopened by the U2CI application.

8.3 EXPORTING DATA IN AN OPEN FORMAT (SAVE AS)

The U2CI application also allows you to export data so that it is useable by other programs.

To export data from an open U2CI Data Window:

- 1) Select the "**SAVE AS**" command under the active Data Window's File Control Menu (Figure 42).

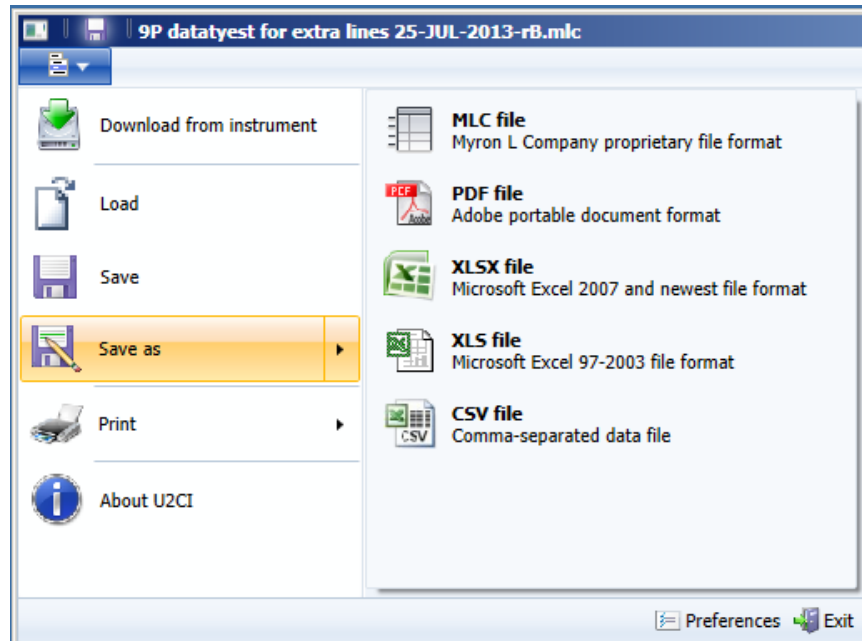


Figure 42

- 2) A standard Windows Save dialogue box will open that allows you to:
- 3) Select the save location.
- 4) Choose a one of the following file formats for the exported data.
 - MS Excel 97-2004 (.xls).
 - MS Excel 2007 and later (.xlsx).
 - Comma Separated Values format (.csv).
 - Portable Document Format (.pdf).
- 5) Give the file a title.
- 6) Complete the process by either:
 - Clicking "**SAVE**" to proceed with the export process or;
 - Click "**Cancel**" to halt the operation.

NOTES:

- The formats listed above are not encrypted.
- You will not be able to reopen the exported copies of the data using the U2CI program.
- The .pdf format has the Optical Character Recognition option turned off and is not editable.
- Unlike the Save As operation of other Windows applications , the U2CI application does not rename the open .mlc file or covert it to the chosen format.
 - Instead it creates a copy of the data, in the chosen format, at the location specified in the Save As Dialogue Box.
 - These copies will **NOT** appear in the Recent Document list.
- Values of measurements will be exported in their original, non-truncated, non-rounded state so that data exported is at its full resolution.

8.4 PRINTING AND PAGE SETUP

U2CI data can be printed using the Page Setup and Print commands. These files can be printed in either Portrait or Landscape orientations. When printed:

- The Data tab will print on first.
- The contents of the Reference Info Field will appear at the bottom of the last page of the data printout.
- Each graph will be printed on a separate page following the data printout.

PRINTING:

To open the print dialogue box:

- 1) Select the **"Print"** command under the Window Control menu.
- 2) Select **"Print"** from the choices in the pop up menu.

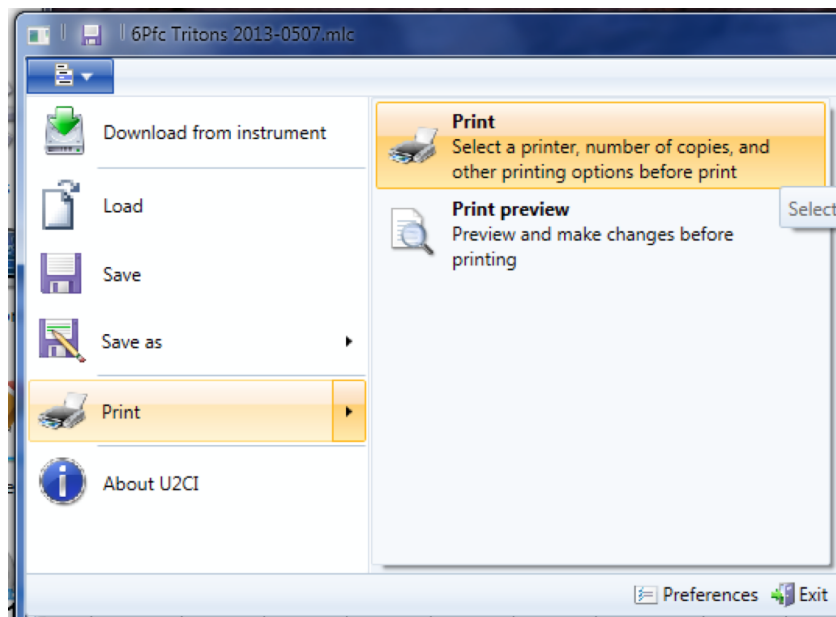


Figure 43

- 3) A print dialogue box will appear.

- The exact layout and content of this dialogue box will be dependent on the specific printer drivers installed on your system.
- Page Setup preferences are available in the print dialogue box.

PRINT PREVIEW:

Selecting the Print Preview option will open a separate window that allows you to view each page of the prospective printout (Figure 43).

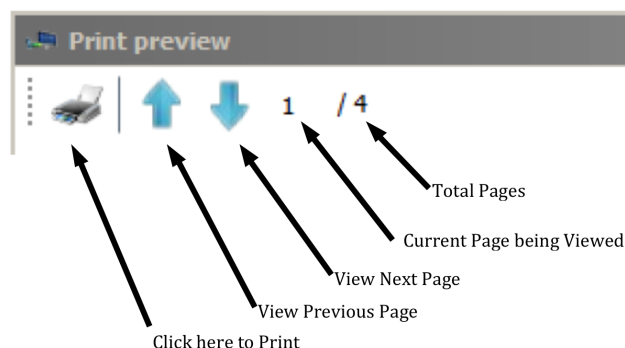


Figure 44

8.5 ADDING REFERENCE INFORMATION

Each Data window includes a Reference Info field that is an editable field that appears at the bottom of the Data Window where the user can add general notes or supplementary information about the data.

You can Show/Hide this field by clicking the "**REFERENCE INFO**" button in the active Data Window's Home Menu (Figure 45).

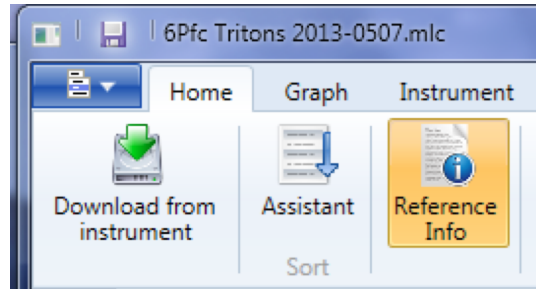


Figure 45

Place the cursor anywhere within the Reference Info Field at the bottom of data window and click.

- A blinking text cursor (a vertical line) will appear. You may now begin entering information.
- Once you have completed entering or editing the reference information, Use the standard **Save** command to retain the information.

NOTES:

- Repeating any of the above three actions will toggle Show/Hide the Reference Info field and any information entered there..
- The Reference Info field will accept all standard alpha numeric characters available in the Ariel font set including manual line breaks (Return key).
- If the contents exceed the vertical size of the window a vertical scroll bar will appear.
 - You may change the vertical size of the Reference Info field window by:
 - Moving the cursor over the border line at the top of the Reference Info field.
 - Pressing and holding the primary mouse button.
 - Dragging the header border up or down until the column is the desired height.
- Once you have completed entering or editing the reference information, Use the Save command to preserve the information in this data file / window.

REFERENCE FIELD SHORT CUT KEYS

The following Keyboard Shortcuts can be used when editing the Reference Info Field.

- **(CTRL +X)**: Cuts selected text from the Reference Info field.
- **(CTRL +C)**: Copy's text from the Reference Info field.
- **(CTRL +V)**: Pastes text into the Reference Info field.
- **(CTRL +A)**: Selects all text in the Reference Info field.

8.6 SORTING DATA

QUICK SORT:

- 1) Click the Column heading of any column (except the "#" column) to sort the entire data file according its the contents .
 - The first time you click a column it will sort the file in ascending order according to that column.
 - Each time you click the same column the application will alternate between ascending and descending order.

Table 2 – Data Field Sorting Styles

Column	Data type	Sorting method
#	N/A	This column includes the line number within the data table and is not sortable.
Record #	Value Field	Numeric Sorting
Measurement	Text Field	Alphabetic Sorting – Not case sensitive
Value	Value Field	Numeric Sorting
Unit	Text Field	Alphabetic Sorting – Not case sensitive
Solution	Text Field	Alphabetic Sorting – Not case sensitive
Temp	Value Field	Numeric Sorting
Date	Date Field	Date Sorting: Numeric sorting by Year 1st, Month 2nd; Day 3rd.
Time	Time Field	Time Sorting: Numeric sorting by Hours 1st, Minutes 2nd, Seconds 3rd.
FCe-ORP	Value Field	Numeric Sorting
FCe-pH	Value Field	Numeric Sorting
LSI-ALK	Value Field	Numeric Sorting
LSI-HARD	Value Field	Numeric Sorting
LSI-pH	Value Field	Numeric Sorting
Instrument	Text Field	Alphabetic Sorting – Not case sensitive
Location	Text Field	Alphabetic Sorting – Not case sensitive

NOTES:

- Numeric Sorting: Numeric fields are sorted as numbers. Ascending order would be:
– 1, 2, 3, 4, 5, 6, 7, 8, 9, 10, 11 20, 21, ... 30,31 ...
- Alphabetic Sorting: Text Fields are sorted alphabetically. Numbers are treated like words, NOT numbers, with each numeral considered to be a separate letter) Ascending order would be:
– 1, 10, 11, ... 2, 20, 21, ... 3, 30, 31 (space) ! " # \$ % & () * , . / : ; ? @ [\] ^ _ ` { | } ~ + < = > A B C D E F G H I J K L M N O P Q R S T U V W X Y Z.

U2CI Software Application – Operation Manual for WINDOWS

MULTI-KEY SORTING

You can do a 3-level nested sort by:

- 1) Clicking the **"SORT"** button Data Window Home Menu Figure 47).



Figure 46

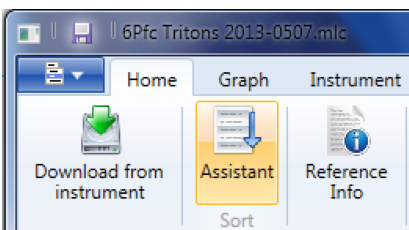


Figure 47

- 2) The following dialogue box will appear (Figure 48):

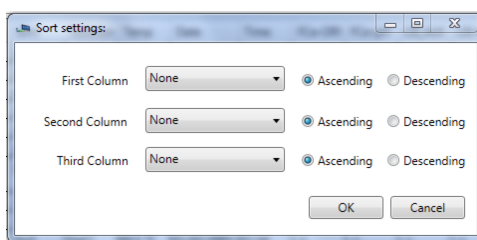


Figure 48

- 3) For each of the nested sort keys,
 - Use the drop down menus from this window to select a data column for each of the three keys (Figure 49).
 - The default setting for each KEY is **"NONE"**.
 - Choosing **"NONE"** deactivates that key.
 - Select whether to sort in ascending or descending order.

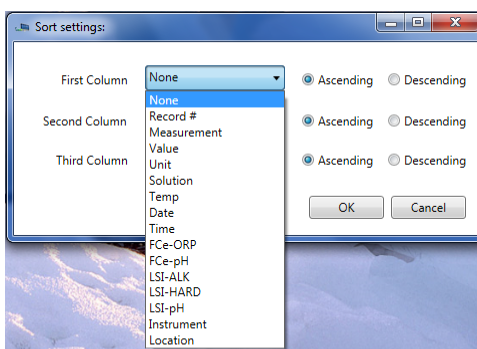


Figure 49

- 4) Click the **"OK"** button to proceed.
 - Click the **"Cancel"** button to abort the operation.

NOTE:

- Setting all three keys to "NONE" will reset the contents of the data window to their original download order.

8.7 PREFERENCES

The U2CI Preference Dialogue box allows the user to:

- Select which COM port and therefore with which Instrument the U2CI application will be interacting.
- Change the manner in which the following data is displayed:
 - Temperatures
 - Dates
 - Times
- These display format settings effect all tabs in the open Data Window, including Graph Tabs.

To gain access to the Open the **Preferences** dialogue box:

- 1) Open the Preferences dialogue box by clicking on the "**PREFERENCES**" button on the Tool Panel (Figure 50).

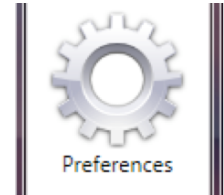


Figure 50

- 2) The following dialogue box will appear (Figure 51).

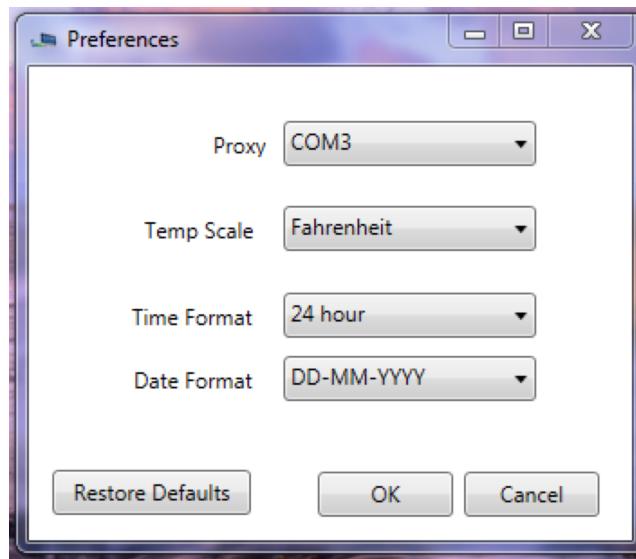


Figure 51

- **Port:** This drop down menu lists the currently open comports to which Myron L Company instruments have been paired (see Section 6).
- **Temp Scale:** This drop down menu allows you to choose between displaying temperature data in either °C or °F.
- **Time Format:** This drop down menu allows you to choose between displaying times as either **AM / PM** values or in a **24-hour Clock** format (e.g. 4:00PM = 16:00)
- **Date Format:** This drop down menu allows you to choose between displaying dates in either:
 - **Day First** Format (DD-MM-YYYY).
 - **Month First** format (MM/DD/YY).
 - **Year First** Format (YYYY-MM-DD).
 - Format choice does not effect the sort order for dates.

- 3) Once you have made your selections

- Click "**RESTORE DEFAULTS**" to reset all of the preference settings to their default selections. After resetting the preferences:
- Click "**OK**" to save the chosen/reset preferences and close the dialogue box.
- Click "**CANCEL**" to close the dialogue box without saving changes to the preference settings.

U2CI Software Application – Operation Manual for WINDOWS

Simple Graphs

8.8 GENERAL GRAPH INFORMATION

The U2CI application can be used to produce simple graphs of the data in a single window.

- Currently the graph feature can only create graphs based on measurement type, such as:
 - All pH values,
 - All COND values,
 - All ORP values, etc.
- There is no capability to limit the graph range to only include only some of the values of a type. Example: pH values between May 1st and May 10th".

These graphs can be one of two types:

- A line graph of one type of measurement.
- Histogram of one type of measurement.

Once a graph is created a separate tab will appear in the data window in which the graph is displayed (Figure 47).

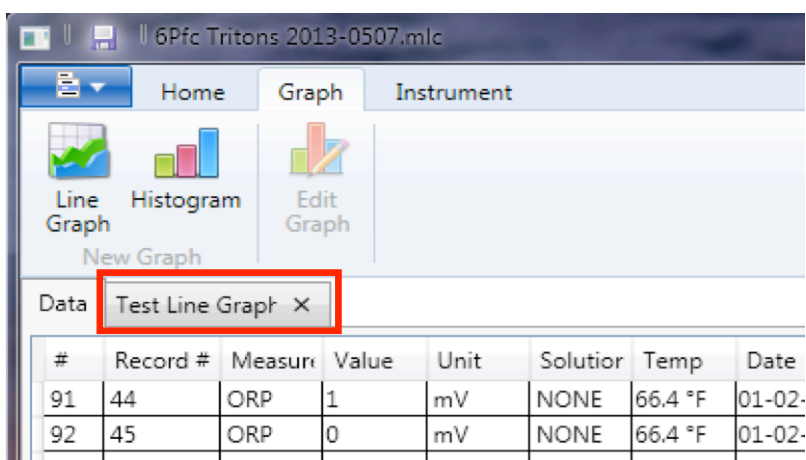


Figure 52

NOTE: If a more complex type of graph is desired, export the data as either an .xls or .xlsx file and import it into MS Excel.

8.9 CREATING SIMPLE LINE GRAPHS

To create a line graph:

- 1) Select the Data Tab of an open U2CI Data Window.
- 2) Once the Data Window is active, open the Graph menu and select the "**Line Graph**" button (Figure 53).

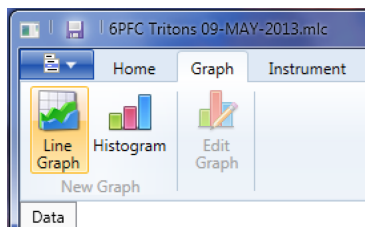


Figure 53

- 3) The following dialogue box will open (Figure 54).

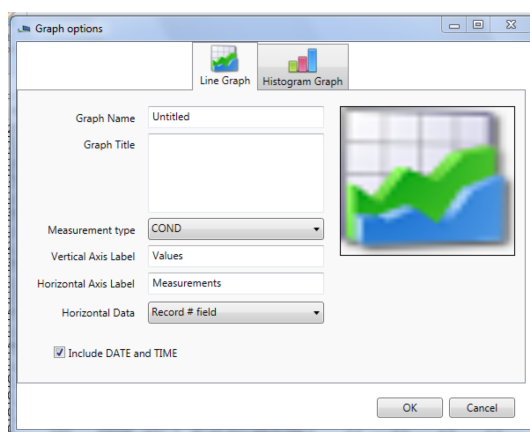


Figure 54

- 4) Use the available fields and menus to design the graph.

LINE GRAPH DIALOGUE BOX FIELDS AND MENUS

- **Graph Name:** Type the name you wish to appear in the Data Window's Graph Tab.
- **Graph Title:** Type the title that is to appear on the graph.
- **Measurement Type:** Use this drop down menu to select which type of value will be used in the graph.
- **Vertical Axis Label:** Type the label to appear next to the graph's vertical axis.
- **Horizontal Axis Label:** Type the label to appear next to the graph's Horizontal axis.
- **Horizontal Data:** Use this drop down menu to chose how the data labels for the Horizontal axis are to be created. The choices are:
 - Record # Field:
 - Date Field:
 - Date and Time Field:
- **Include Date and Time:** Checking this box will cause the date and time the graph was created to be displayed on the graph.

U2CI Software Application – Operation Manual for WINDOWS

- 5) Click the **"OK"** button to build the graph.
- A new Graph Tab will appear in the Data Window.
 - Click the **"Cancel"** button to abort the process.

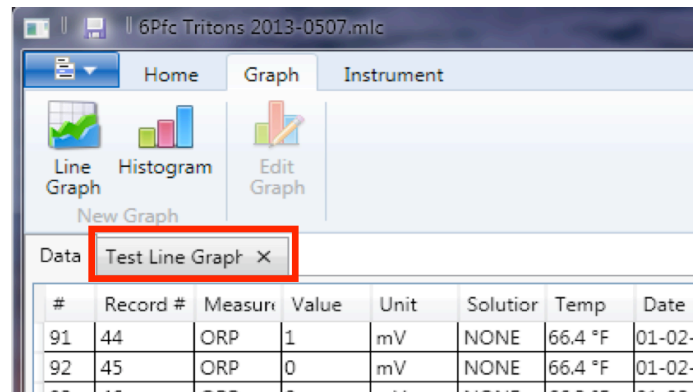


Figure 55

To view the graph, click on the Graph Tab.

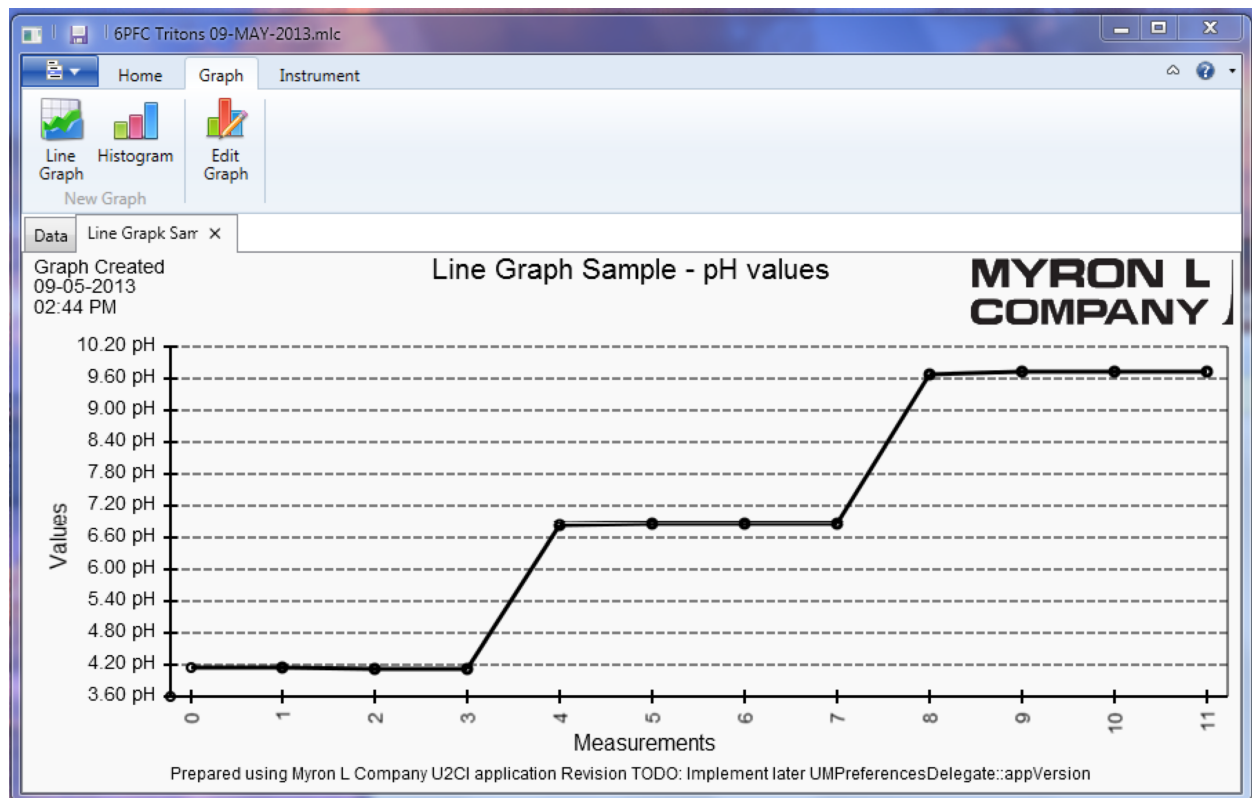


Figure 56

8.10 CREATING SIMPLE HISTOGRAMS

To create a Histogram:

- 6) Select the Data Tab of an open U2CI Data Window.
- 1) Once the Data Window is active, open the Graph menu and select the "**Histogram**" button (Figure 57).

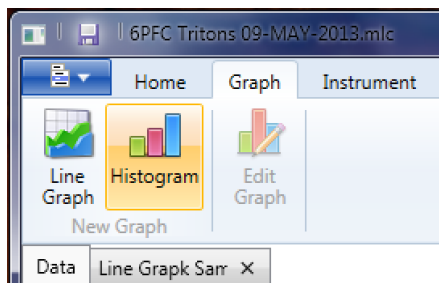


Figure 57

- 2) The following dialogue box will open (Figure 58).

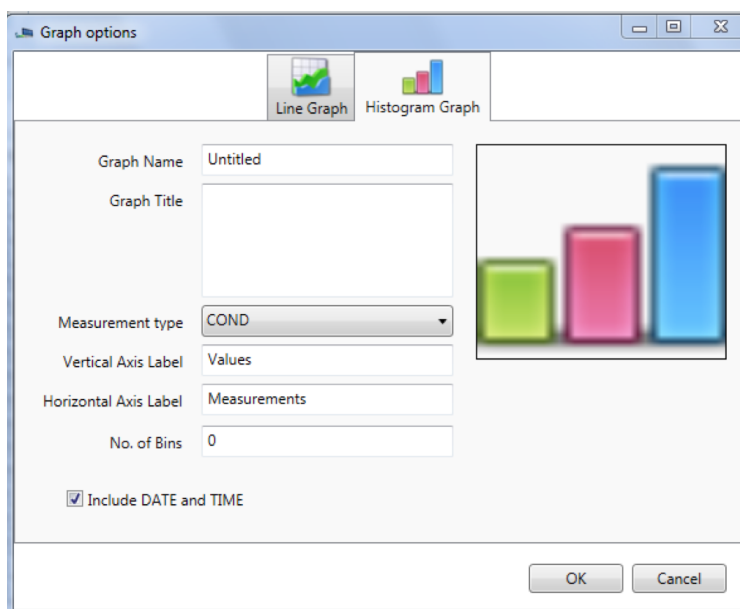


Figure 58

- 3) Use the available fields and menus to design the graph.

HISTOGRAM DIALOGUE BOX FIELDS AND MENUS

The various controls and fields in this box are the same as those in the Line Graph dialogue box (see Section 8.9), except for:

- **No. of Bins:** This field controls the number of "Bins", or vertical bars, into which the values will be divided on the Histogram.
 - A common practice for estimating the bin number is to take the square root of the number of values (rounded down).
 - EXAMPLE: if there are 26 pH measurements, the estimated number of bins would be:
 $\sqrt{26} = 5.099$ or 5
- There is no **Horizontal Data** drop down menu since the data labels for a histogram are the minimum and maximum limits of each bin and are computed by the U2CI application.

U2CI Software Application – Operation Manual for WINDOWS

- 4) Click the **"OK"** button to build the graph.
 - A new Graph Tab will appear in the Data Window.
 - Click the **"Cancel"** button to abort the process.
- 5) Click on the Graph Tab to view the graph.

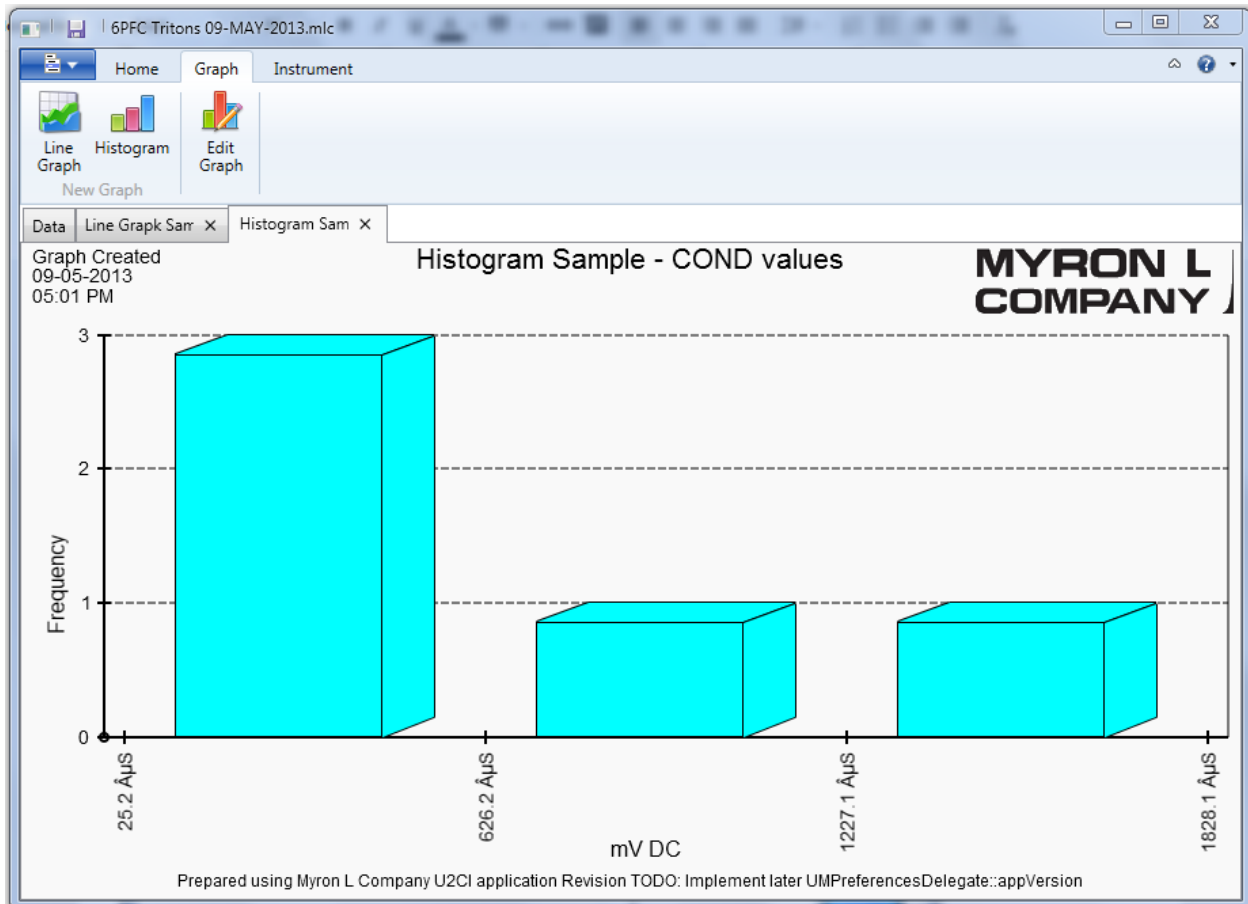


Figure 59

8.11 EDITING AND CHANGING GRAPHS

Once created, graphs can be edited and updated.

Appended Data:

If new data appended to an existing data file of a measurement type included in an existing Graph Tab, the graph will automatically update to include the new data.

- **Example:** If additional pH data is added to a data file that includes a graph of pH values, the graph will automatically update to include the new pH data.

NOTE: Because it is not possible to limit the range of the graphs by more than the measurement type, if a separate graph is desired for the new data, it must be downloaded into a separate, new Data Window and not appended to a previous data file.

- **Example:** To have separate graphs for pH data from February of 2013 and March of 2013, the February measurements must be downloaded into a separate data file from the March measurements.

MANUALLY EDITING A GRAPH:

To edit an existing Graph:

- 1) Select the Graph Tab to be edited.
- 2) Select the **"Edit Graph"** button under the Data Window Graph menu (Figure 60).

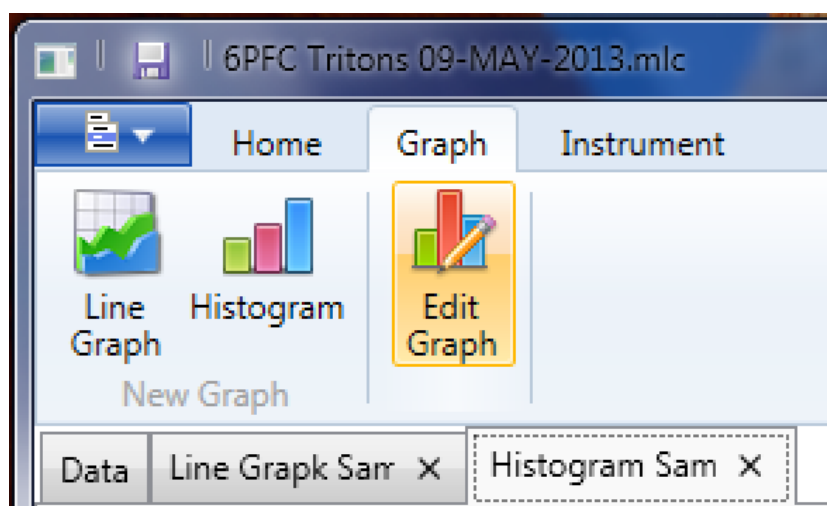


Figure 60

- 3) A Graph dialogue box will open for the appropriate type of graph (Line or Histogram), in this example the sample histogram is from the previous section.
 - The various fields will auto fill with the current graph's information.
- 4) Click on the **"OK"** button to redraw the graph with the changed settings.
 - Click the **"Cancel"** button to abort the process.

8.12 DELETING A GRAPH FROM A DATA WINDOW

NOTE:

This can not be undone.

To delete a graph from a Data Window:

- 5) Click the "X" at the left of the Graph Tab to delete the graph (Figure 61).

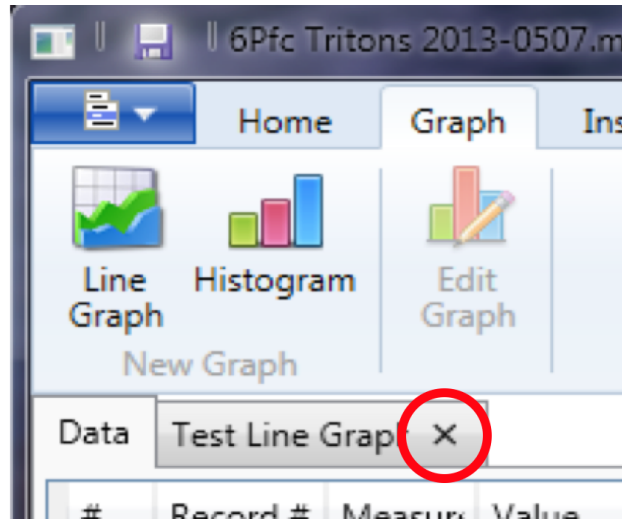


Figure 61

- 6) A confirmation dialogue box will appear (Figure 62).

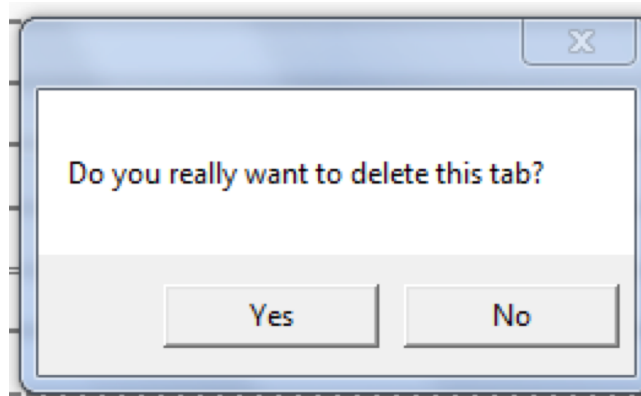


Figure 62

- 7) Click "**YES**" to permanently delete the Graph Tab from the Data Window / File.
 - Click "**NO**" to leave the Graph Tab as is.

9. TROUBLESHOOTING

9.1 ERROR MESSAGES

At various times during its operation the U2CI application may issue an error message. The most common place this can occur is if the user attempts to perform any action that requires the U2CI application to communicate with a Myron L Company Instrument, but:

- The instrument is asleep.
- The instrument is awake but the PC mode is still set to "**OFF**"
- The wrong COM port is selected in the Preferences/Port drop down menu.
- The MAC OS Bluetooth preference window indicates that the device connection is closed.

If this is the case the U2CI application will display an error message.

EXAMPLE: The user clicks the Assign Name button in the Function Tool Bar while the currently paired and connected Ultrameter is asleep. The following message will appear (Figure 63):

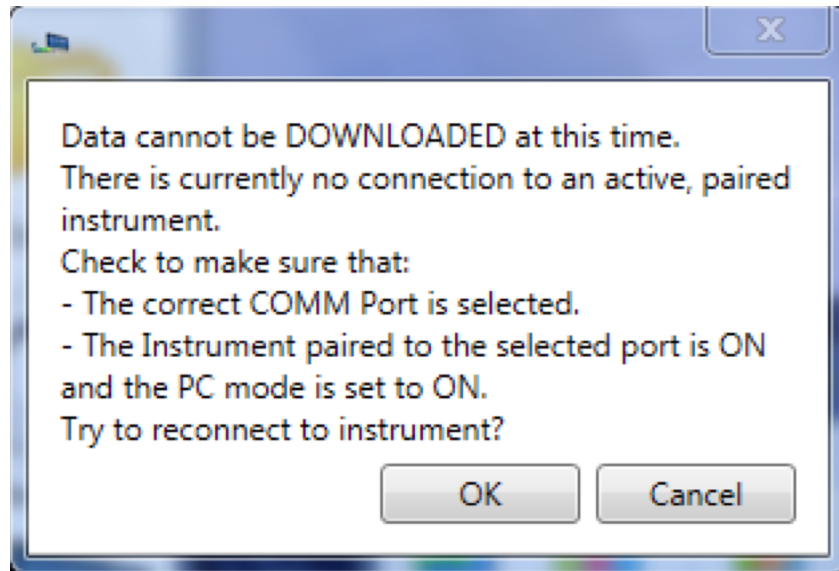


Figure 63

- Click the "**CANCEL**" Button to stop the process, or;
- Correct the underlying connection issue by follow the instructions of Pairing and Connecting to an Instrument (Section 6), then Click the "**OK**" button to continue.

The functions for which this type of Error message can appear are:

- DOWNLOAD FROM INSTRUMENT
- ASSIGN NAME
- SET DATE TIME
- ERASE MEMORY

9.2 OTHER TROUBLESHOOTING TIPS

SYMPTOM: The Reference Info Window is missing from the bottom of the Data Window

- **CAUSE:** The Reference Info Window is has been accidentally hidden.
- **SOLUTION:** Unhide it by selecting the "**REFERENCE INFO**" button under the Data Window Home menu (Figure 64).

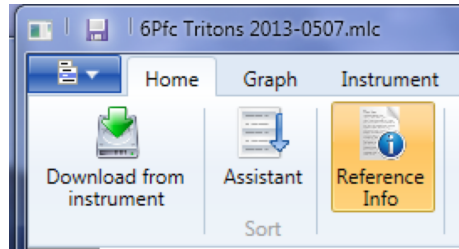


Figure 64

SYMPTOM: "Cannot Connect" error message appears repeatedly during one of the following operation:

- DOWNLOADING FROM INSTRUMENT
- ASSIGNING A NAME
- SETTING THE DATE AND TIME
- ERASING MEMORY
- **CAUSE:** The instrument and the U2CI application are having trouble communicating.
- **SOLUTION:**
 - Check the following and correct it so:
 - The correct COM port is selected in the U2CI Preference window (see Section 0).
 - The instrument's is awake and that the PC mode is set to "**ON**" (see Section 0).
 - The instrument is paired to your computer and the connection is active (see Sections 6.3).
 - The Instrument's Bluetooth signal is too weak.
 - Try moving the Instrument closer to the host computer.
 - Replace the battery (Even if the Lo Batt indicator is not lit on the Instrument display, the battery may be too weak to broadcast a strong signal).

SYMPTOM: Cannot open a saved .mlc file by using the Recent Files list. Windows displays a "File cannot Be Found" error message

- **CAUSE:** One of the following could be the cause.
 - The file was deleted from the computer.
 - The file was moved to a different location.
 - The file or one of the folders in its path was renamed.
- **SOLUTION:**
 - Attempt to find the file using the standard Windows browse button (see option b) in Section 8.1).
 - Open the file by double clicking on it.
 - The file will appear in the recent file list with a different path.
- **PREVENTION:**
 - Do not rename files or folder or move .mlc files after they have been saved.

U2CI Software Application – Operation Manual for WINDOWS

SYMPTOM: No Data Window opens after data download or loading a saved file.

- **CAUSE:** The U2CI.conf and/or Recent.xml file have become corrupted.
 - This is an extremely rare event that can be caused by MS Windows behaviors external to the U2CI application.

- **SOLUTION:**

For Windows 7 Users:

- Have your System administrator or IT department find and delete the following files:
 - C:\Users\[inset user account name]\App Data\Local\ U2CI\U2CI.conf
 - C:\Users\[inset user account name]\App Data\Local\ U2CI\recent.xml

For Windows XP Users:

- Have your System administrator or IT department find and delete the following files:
 - C:\Documents and Settings\[inset user account name]\Local Settings\Application Data\U2CI\U2CI.conf
 - C:\Documents and Settings\[inset user account name]\Local Settings\Application Data\U2CI\Recent.xml

- Restart the U2CI program.

- **NOTES:**

- The user account folder will have to be set to reveal hidden files in order to see the App Data folder.
- The U2CI Recent Document file list will be blank.

SYMPTOM: The wrong icons appear for the U2CI application and .mlc files on the desktop, and in the task bar and folders.

- **CAUSE:** This occurs sometimes because the .mlc extension is already used by Microsoft Windows OS. Microsoft to designate Language Interface Packs.

- This is an rare event that can be caused by MS Windows behaviors external to the U2CI application.

- **SOLUTION:**

- To correct this issue and reset U2CI Icons:
 - 1) Right click on any .mlc.
 - 2) Select properties from the pop up menu.
 - 3) Find the "Opens with" field and click the "CHANGE" button.
 - 4) The "Opens With" dialogue box will open.
 - 5) If "U2CI" is presented as one of the choices, select it.
 - 6) If "U2CI" is NOT presented as one of the choices, select "Browse" and find the U2CI Application.
 - On 32 bit systems it will be in the "Program files (x86) folder.
 - On 64 bit systems it will be in the "Program Files" folder
 - 7) Open the U2CI folder and select U2CI.exe
 - 8) If it is not already checked, check "Always use the selected program to open this kind of file".
 - this option may not be enabled on some systems.
 - 9) Click the "OK" button in the "Opens With" dialogue box.
 - 10) Click "Apply" in the window with current file properties.
 - 11) If file icons have not changed - reboot computer.

MYRON L[®] COMPANY
2450 Impala Drive
Carlsbad, CA 92010-7226
USA

Tel: +1-760-438-2021
Fax: +1-760-931-9189

E-Mail: info@myronl.com
techquestions@myronl.com

www.myronl.com
Made In USA