

# Quick Start Installation Guide

## U2CI™ uDock™ and Ultrameter II™ Series & PoolPro™ Interface

**Order Accessory Package:** U2CIP

**Package Includes:**

uDock™ with USB Cable, U2CI Software CD,  
and Quick Start Installation Guide for  
downloading data from your Ultrameter II or POOLPRO

It is highly recommended you save your work and exit applications prior to installation of this software.

**Requirements:**

Computer running Windows XP™, Windows Vista™ or Mac OS 10.0 – 10.4.11 operating systems. (We will release a version for Mac OS 10.5 in the near future, and it will be available for download on our website.) Be aware that Vista will not save your user settings.

**WARNING: USERS THAT HAVE PREVIOUSLY INSTALLED REV 1.0 MUST UNINSTALL IT PRIOR TO INSTALLING U2CI REV 1.1.3.** (If you are unsure of how to uninstall and install programs on your machine, contact your IT Department or System Administrator for assistance.)

Before installing the new U2CI 1.1.3, Windows users must open the “Start” menu, select “Control Panel”, then select “Add or Remove Programs”. Scroll to “U2CI”; select it and click on “Remove”. No System Reboot is required.

Mac OS X users should select “Go” in the Finder menu bar, then select “Applications”, and then scroll down to the U2CI folder. Drag the folder to the trash.

### U2CI Installation for Windows™ Platforms

1. U2CI Executable and Support Files Installation.
  - a. Insert U2CI software CD into CD drive or download the installation package from the Myron L “Download Center”:  
[http://myronl.com/main/U2CI\\_Application\\_DL.htm](http://myronl.com/main/U2CI_Application_DL.htm)
  - b. If Auto Install does not start, double click on U2CI.msi.
  - c. Follow installation procedure as prompted. Use the default settings whenever possible.
2. Myron L uDock, USB Driver and USB Serial Converter Installation.
  - a. Insert uDock into any USB port on your computer.
  - b. Follow driver installation procedure as prompted.
  - c. In the “Found New Hardware Wizard” window, choose “Install the software automatically” (recommended) or you may choose to install the drivers from the CD.\*
  - d. Complete the installation of the USB Driver.\*\*
  - e. Repeat the above steps for the USB Serial Converter installation.

**NOTE:** For Windows Vista users, the above process is managed by the operating system and drivers will be automatically installed. Please also note that the Vista operating system will prompt for permission for driver installation.

3. Eject the CD and restart your computer.
4. Start the U2CI application.
5. Open the “Edit” pull-down menu and select “Preferences”.
6. On your “Preferences” window, select the highest available port.
7. Click “Save”.

**NOTE:** For Vista users, please repeat steps 6 and 7 — even if there is no change in the serial communication port assignment — every time the U2CI program starts.

8. You are now ready to download data from your Ultrameter II or POOLPRO (see Download Data section).

*\* If you downloaded U2CI software package from our website, you can install the software automatically (recommended) or you must select the installation location. The default installation location is C:/Program files/U2CI.*

### U2CI Installation for Macintosh OS X

1. Insert U2CI software CD into CD drive (or download the U2CI software package for Macintosh OS X from the “Download Center”:  
[http://myronl.com/main/U2CI\\_Application\\_DL.htm](http://myronl.com/main/U2CI_Application_DL.htm)
2. Double click on the “U2CI” disk icon.
3. Double click on the “U2CI For Mac OS X”, and follow the prompts to complete the U2CI application installation.
4. Install the uDock device driver. Click the Apple icon in the very left of the Finder menu bar. Select “About This Mac” and note whether your computer has a G-series or Intel processor.

*Continued*




**MYRON L  
COMPANY**  
Water Quality Instrumentation  
*Accuracy • Reliability • Simplicity*

Click "Go" in the Finder menu bar and then "Applications". Scroll down to the "U2CI" folder and open. Select the "Drivers" folder and open.

If your computer is running on an Intel processor, double-click on the file "FTDIUSBSerialDriver\_v2\_2\_9.dmg". If your computer is running on a G-series processor (G3, G4, or G5), double-click on the file "FTDIUSBSerialDriver.pkg". The driver installation software will launch. "Install FTDIUSBSerialDriver Kernel Extension" dialog box will then display. Follow prompts to complete driver installation.\*\*

5. Eject the CD and restart your computer.
6. Connect the uDock's cable to an available USB port on your computer.
7. Start the U2CI application.
8. Open the "Edit" pull-down menu and select "Preferences".
9. On your "Preferences" window, open the "Port" pull-down menu and select "usbserial-XXXX".
10. Click "Save".
11. You are now ready to download data from your Ultrameter II or POOLPRO (see Download Data section).

#### Download Data from Ultrameter II or POOLPRO

1. Set the Ultrameter II or POOLPRO on the uDock.
2. Press  to power up the Ultrameter II or POOLPRO.
3. Press and hold  until "PC OFF" is displayed. Then press . The display may briefly indicate "PC Ini". Then "PC On" will display.

4. Click the Download Data button on the U2CI screen on your computer.
5. At this point, you may manipulate data, enter reference information, print, or save as desired.

#### Save a Data File

There are two ways to save the data you have downloaded from your Ultrameter II or POOLPRO:

1. MLC data format is used by the Myron L Company's U2CI application software. Saving your data in a .mlc format enables you to load the data file back into the U2CI software at a later date.
  - a. On the "File" menu, click "Save" to save the data in a .mlc format which may be loaded back into the U2CI software at a later date.
2. CSV (comma separated values) data format can be read by many spreadsheet programs, notably Microsoft Excel™ for Macintosh or PC.
  - a. On the "File" menu, click "Save As" to save the data in a .csv format, which may then be easily imported into most spreadsheet applications, such as Microsoft Excel™.

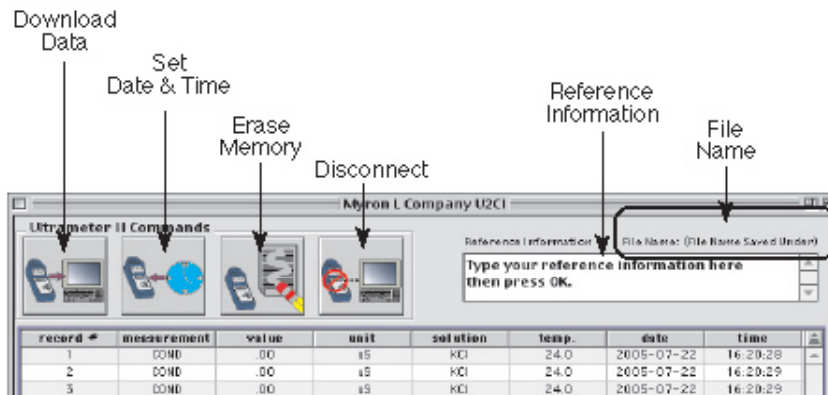
**Note:** When importing your .csv formatted data into Microsoft Excel™, the reading values will default to a scientific format. To view in "Number" format, you must:

1. Select the cells containing the reading values.
2. Click on the "Format" pull-down menu.
3. Select "cells"
4. Under the "Number" tab, select "Number".
5. Click "OK".

**\*\* Administrator rights may be required to install the drivers on your computer.**

#### UMII Commands:

You may use the icon buttons or the "UMII Commands" drop down menu to send commands to your ULTRAMETER II or POOLPRO.



2450 Impala Drive  
 Carlsbad, CA 92010-7226 USA  
 Tel: +1-760-438-2021  
 Fax: +1-800-869-7668 / +1-760-931-9189  
 E-Mail: info@myronl.com  
 techquestions@myronl.com  
 www.myronl.com

**Built On Trust.** Founded in 1957, the Myron L Company is one of the world's leading manufacturers of water quality instruments. Because of our commitment to product improvement, changes in design and specifications are possible. You have our assurance any changes will be guided by our product philosophy: accuracy, reliability, and simplicity.

